

TTM -339 loader software

Setup manual

TOHO ELECTRONICS INC.

Contents

1. Before installing the application.....	1
1.1 Introduction	1
1.2 OS Confirmation.....	1
1.3 NET Framework 3.5 confirmation	1
2. Setup of application software (Windows XP)	2
2.1 Setup.....	2
2.2 Re-setup.....	7
2.3 Uninstallation.....	10
3. Setup of application software (Windows 7)	13
3.1 Setup.....	13
3.2 Re-setup.....	18
3.3 Uninstallation.....	21
4. Method of installing ".NET Framework3.5" manually	24
4.1 Setup flow.....	25
4.2 "dotNetFx35setup.exe" Installation.....	26

1. Before installing the application

1.1 Introduction

The Setup Manual was made based on Window XP. If the operating system is Windows Vista / Windows 7 the sample display will differ slightly.

1.2 OS Confirmation

The personal computer to which the loader software shall be installed will have to have either Windows XP or Windows VISTA or Windows 7 pre-installed.

For Windows XP, it is recommended to have the Service Pack 2 or later version installed.

For Windows Vista, it is recommended to have Service Pack 1 or later version installed.

For Windows 7, it is recommended to have Service Pack 1 or later version installed.

For detailed information on how to set-up Windows XP Service Pack 2, please refer to the following URL.

<http://support.microsoft.com/kb/889736>

For detailed information on how to set-up Windows Vista Service Pack 1, please refer to the following URL.

<http://support.microsoft.com/kb/935791>

For detailed information on how to set-up Windows 7 Service Pack 1, please refer to the following URL.

<http://support.microsoft.com/ph/14019>

1.3 NET Framework 3.5 confirmation

".NET Framework 3.5" is an essential component for the loader software.

Please refer to "4.Method of installing ".NET Framework3.5" manually" when setting up ".NET Framework 3.5" manually.

2. Setup of application software (Windows XP)

2.1 Setup

When the setup file (Setup.exe) is double-clicked, the setup wizard will start-up.
Please setup according to the instruction on the screen.

When an essential component is not found on the personal computer, the setup wizard (Figure2-1) will be start-up.

Please click "Accept" button if you are agreeable to the License Agreement.

When "Don't Accept" button is clicked, the dialog as shown in Figure2-2 will appear and the setup will be terminated.

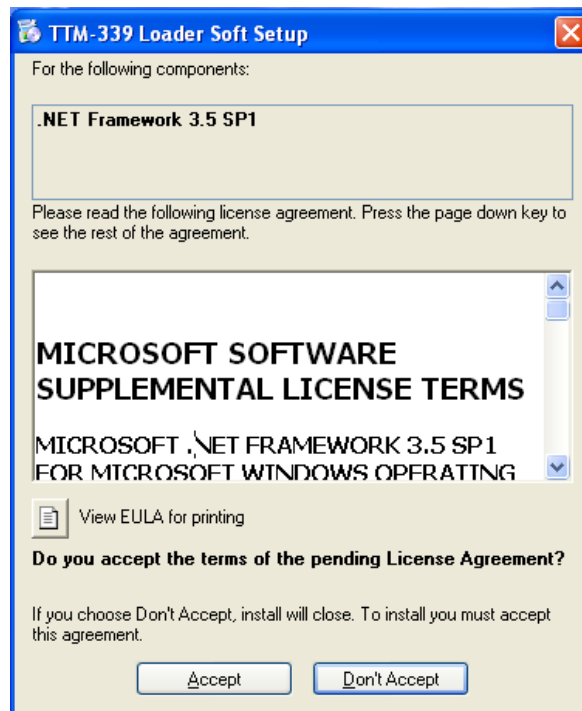


Figure2-1 Essential Component Set-Up Wizard

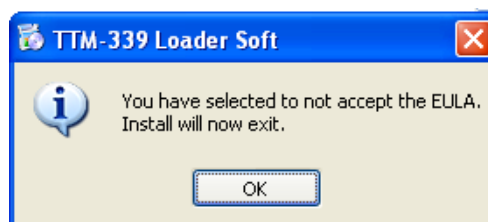


Figure2-2 Installation Finished

When "Accept" button is clicked, the setup of an essential component such as .NET Framework

3.5 will be executed.

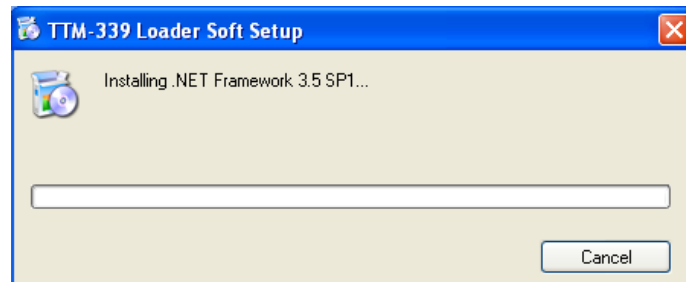


Figure2-3 Set-Up in progress

When the setup of an essential component has completed, or, its setup had already been completed, the "Welcome to the TTM-339 Loader Setup Wizard" screen as shown in Figure2-4 will appear.

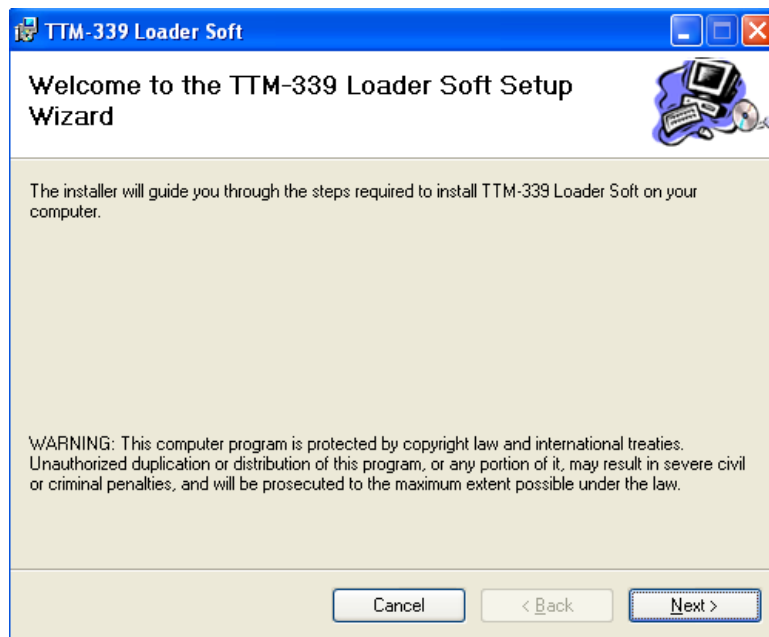


Figure2-4 "Welcome to the TTM-339 Loader Setup Wizard" (setup wizard start-up screen)

When "Next" button is clicked, "Select Installation Folder" screen as shown in Figure2-5 will appear.

Confirm the installation folder and select the user who will use this application, and then click the "Next" button.

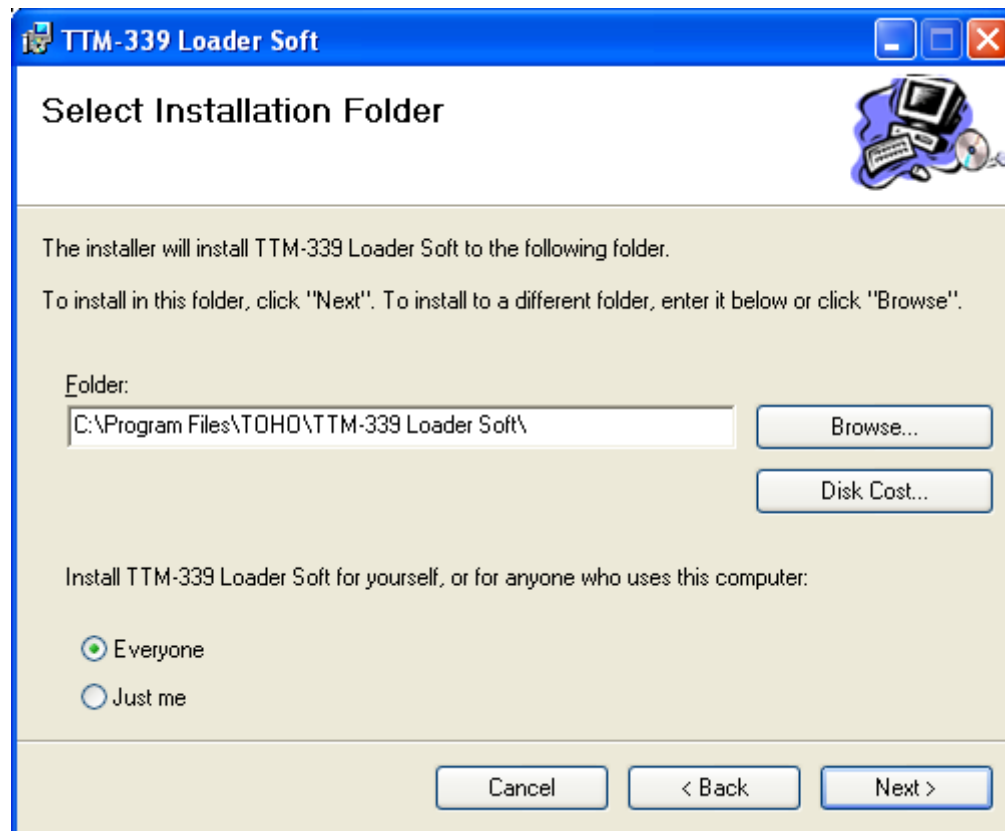


Figure2-5 "Select Installation Folder" screen

The short cut icon will appear on the start menu or on the desktop of all the user accounts when "Everyone" is selected.

The short cut will appear only for a logged-in user when "Just me" is selected.

"Confirm Installation" screen as shown in Figure2-6 will appear.
Please click "Next" button to start the installation.

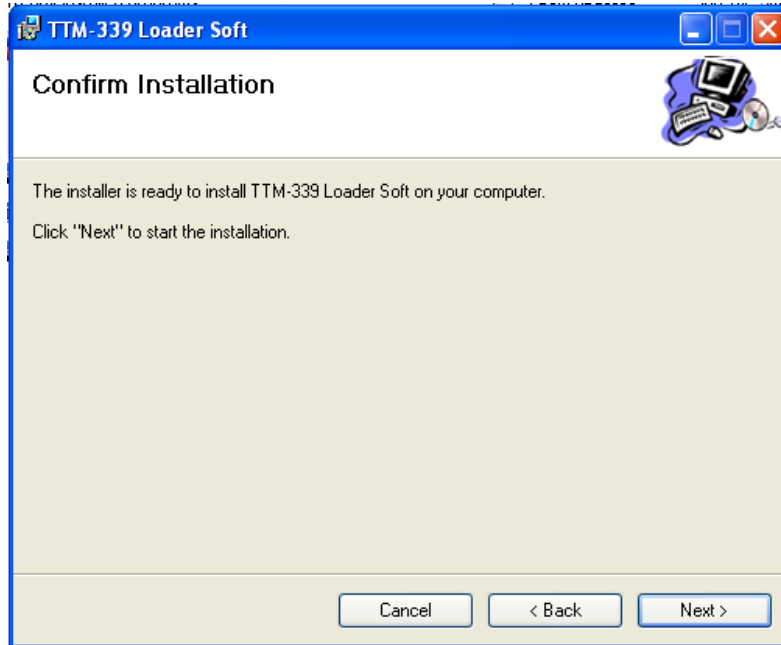


Figure2-6 "Confirm Installation" screen

"Installing TTM-339 Loader Soft" screen as shown in Figure2-7 will appear.
Please wait for a while until the processing is done.

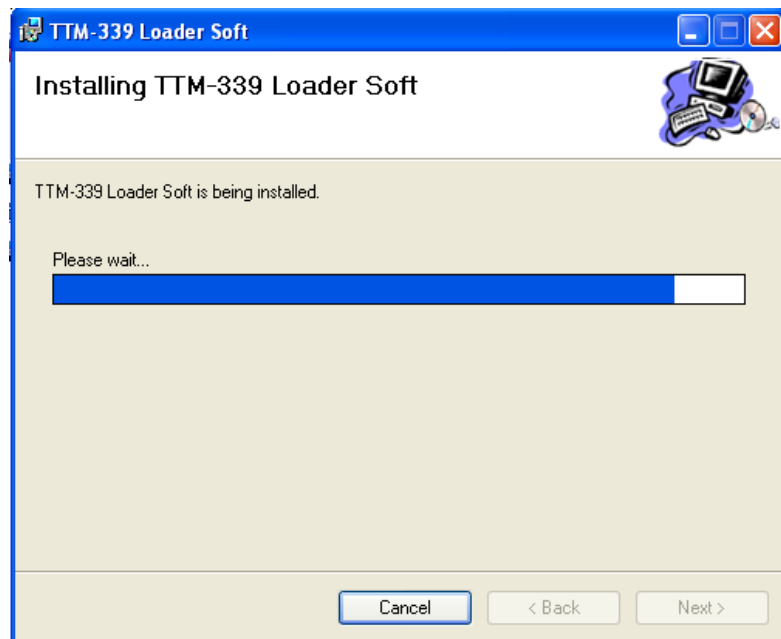


Figure2-7 "Installing TTM-339 Loader Soft" screen

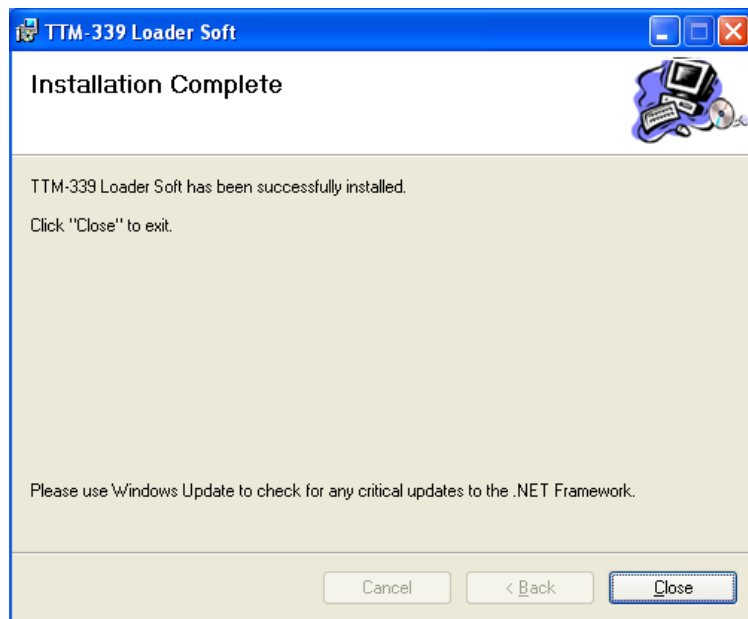


Figure2-8 "Installation complete" screen

"Installation complete" screen as shown in Figure2-8 notifies the completion of the installation. Please click "Close" button to exit the installation.

※ Using "Windows Update", check for any new important updates of .NET Framework.

For details on .NET Framework3.5, please refer to the Microsoft Homepage.

<http://msdn.microsoft.com/en-us/netframework/default.aspx>

2.2 Re-setup

When the setup file (Setup.exe) is double-clicked on the personal computer in which the setup has been done, the "Welcome to the TTM -339 Loader Soft Setup Wizard" as shown in Figure2-9 will be appear.

In case the error message as shown in Figure2-10 appears, delete first the application software from the "Add or Remove Programs" of the "Control panel" before re-installing the software. Please refer to 2.3"Uninstallation" for details.

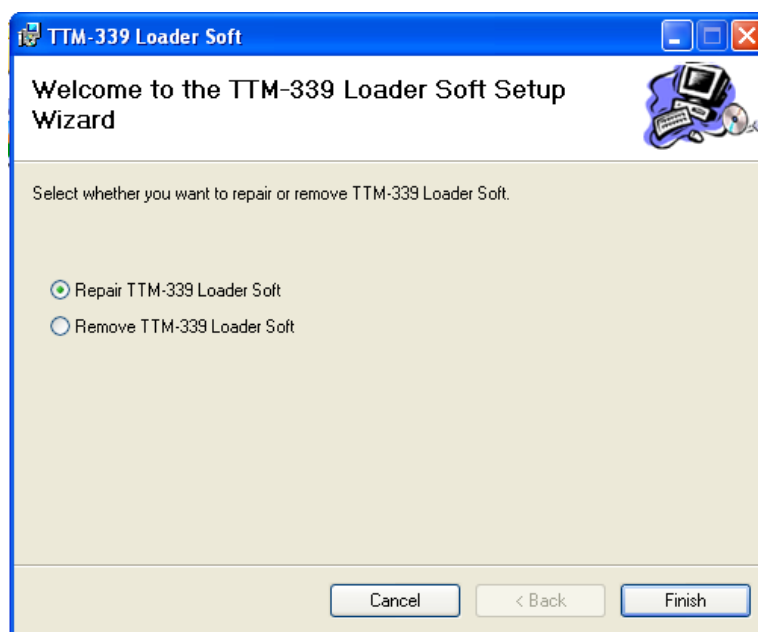


Figure2-9 TTM-339 Loader Soft Set-Up Wizard

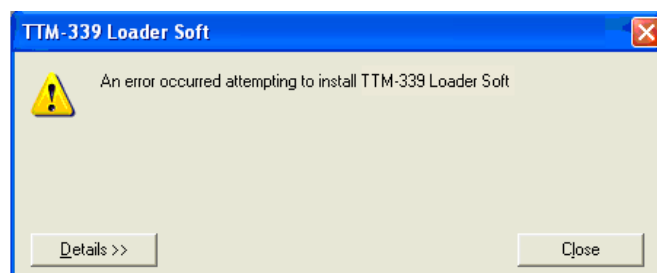


Figure2-10 Set-Up Error

①. Repair

Select "Repair of TTM -339 Loader Soft" and click "Completion" button for Repair Setup.

The screen as shown in Figure2-11 will appear and the repair setup will be executed.

When the repair setup is completed normally, the screen as shown in Figure2-12 will appear.

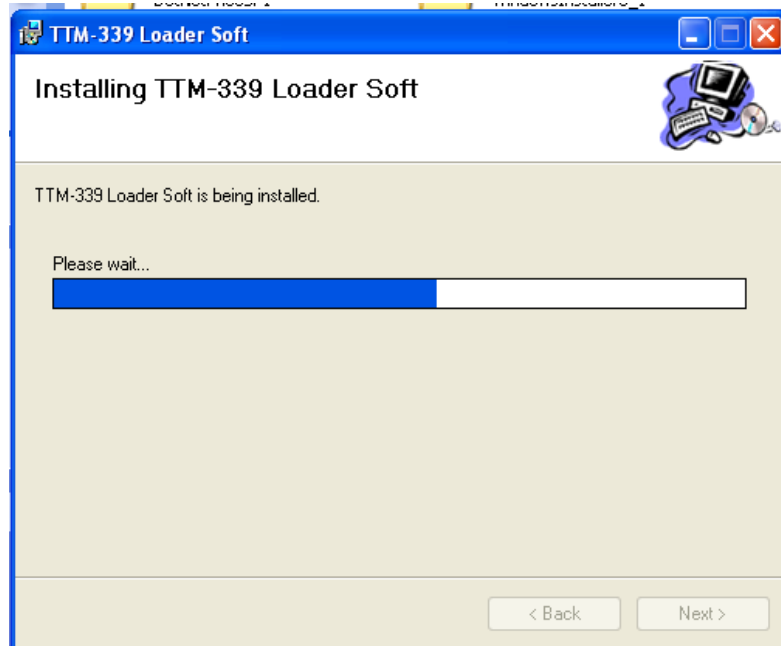


Figure2-11 Install in progress

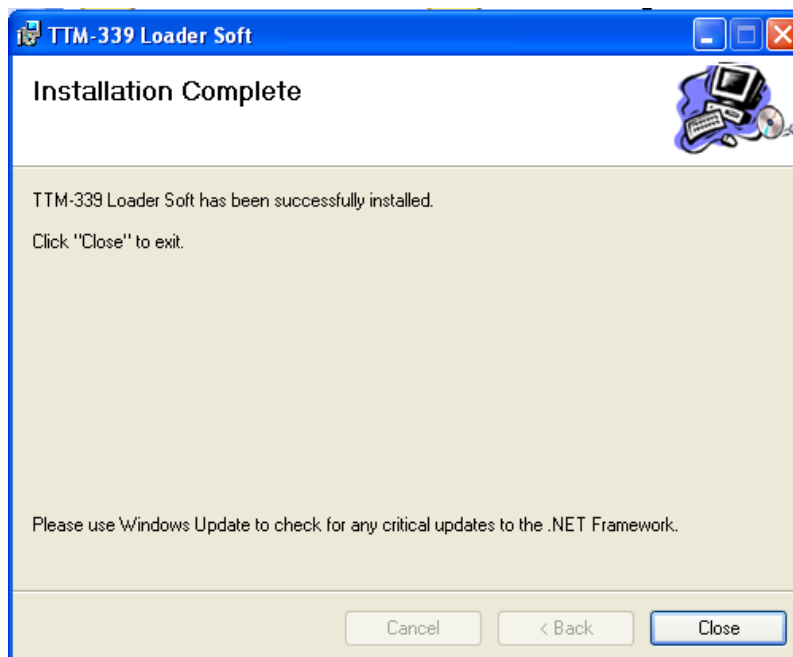


Figure2-12 Installation Completed

②. Deletion

Select "Remove TTM-339 Loader Soft" and click "Finish" button to uninstall.

The screen as shown in Figure2-13 will appear and the removal process will take place.

When deletion is completed normally, the screen as shown in Figure2-14 will appear.

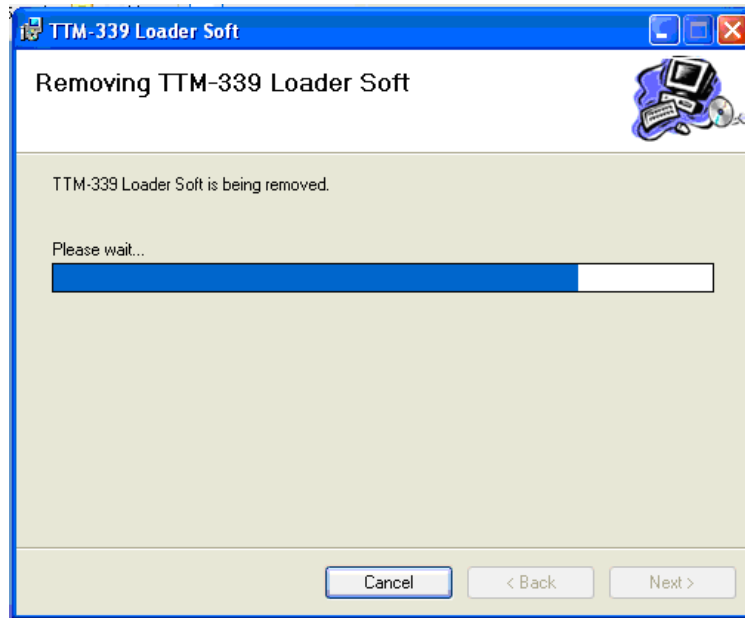


Figure2-13 Uninstallation in progress

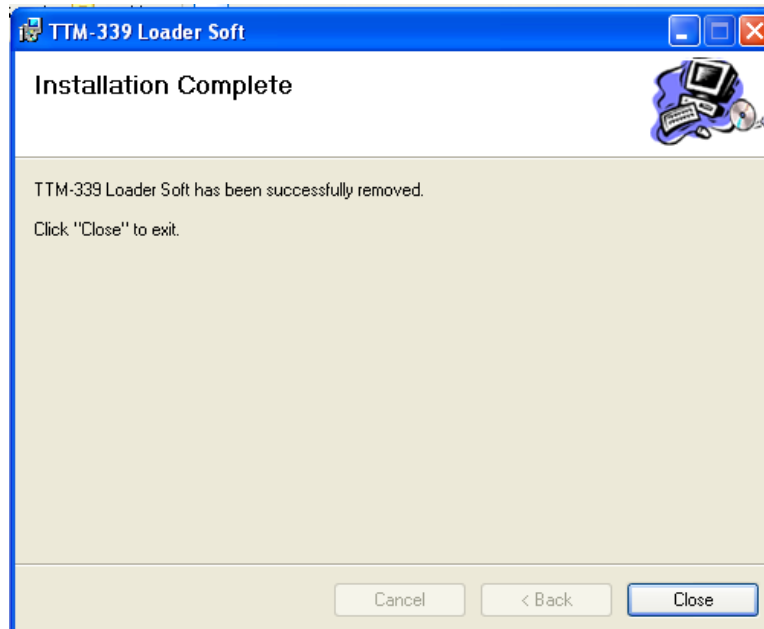


Figure2-14 Uninstallation Completed

2.3 Uninstallation

Uninstallation of the application software is executed from "Add or Remove Programs" of the control panel.

Open the control panel from the start menu and open "Add or Remove Programs".

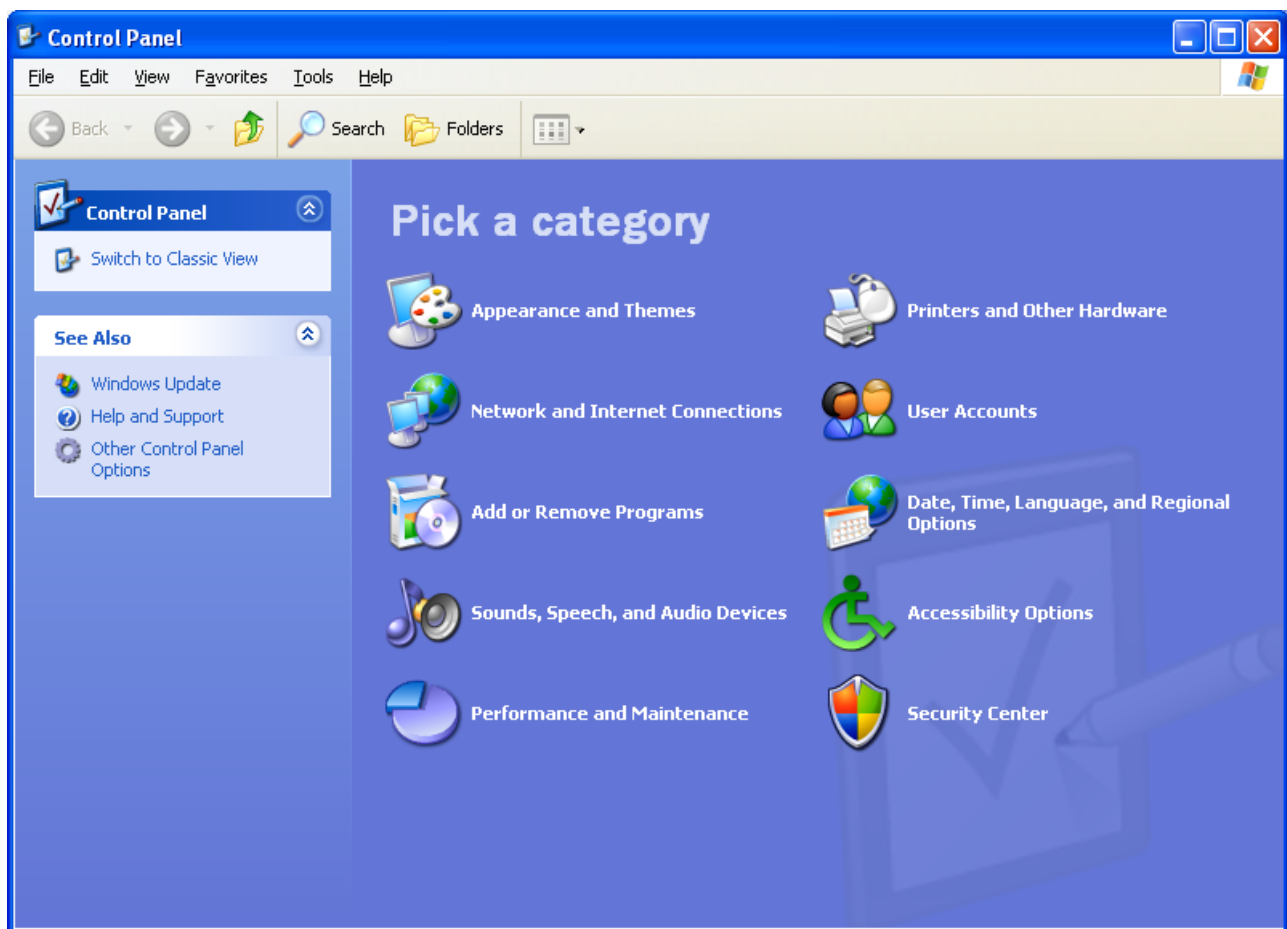


Figure2-15 Control panel

Select "TTM -339 Loader Soft" from "Add or Remove Programs" as shown in Figure2-16. When "Remove" button is clicked, "Delete confirmation" message as shown in Figure2-17 will appear.

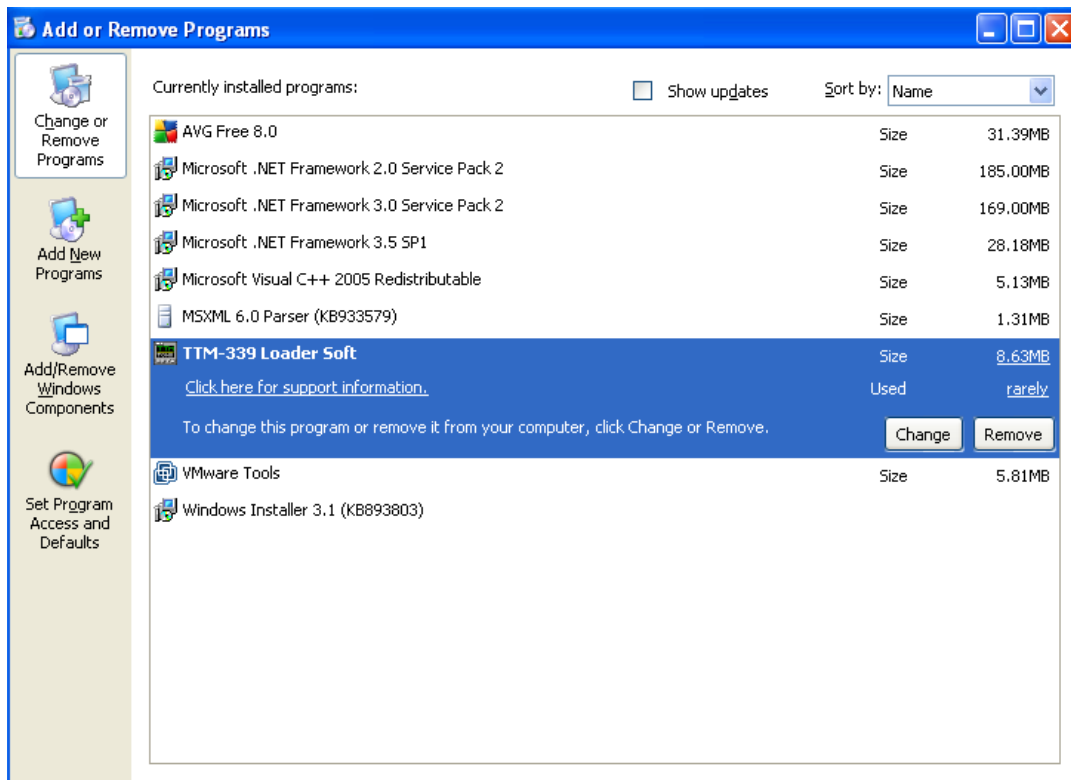


Figure2-16 "Add or Remove Programs" dialog

Click "Yes" button to delete, click "No" button to cancel.

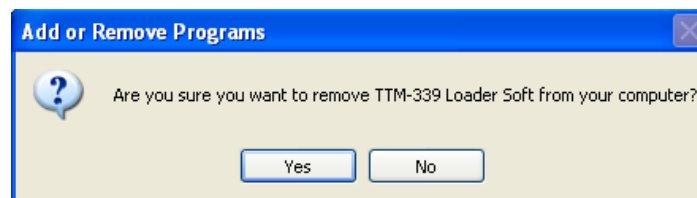


Figure2-17 Delete confirmation

When “Yes” is selected, message as shown in Figure2-18 will appear to show the status.



Figure2-18 Uninstallation status

Figure2-18 will disappear automatically when the uninstallation procedure is completed.

Confirm that item of "TTM -339 Loader Soft" has been deleted from Figure2-16 "Add or Remove Programs".

Moreover, the short-cut icon at the start menu and desktop will also be deleted.

3. Setup of application software (Windows 7)

3.1 Setup

When the setup file (Setup.exe) is double-clicked, the setup wizard will start-up.

Please setup according to the instruction on the screen.

When the setup of an essential component has completed, or, its setup had already been completed, the "Welcome to the TTM-339 Loader Soft Setup Wizard" screen as shown in Figure3-1 will appear.

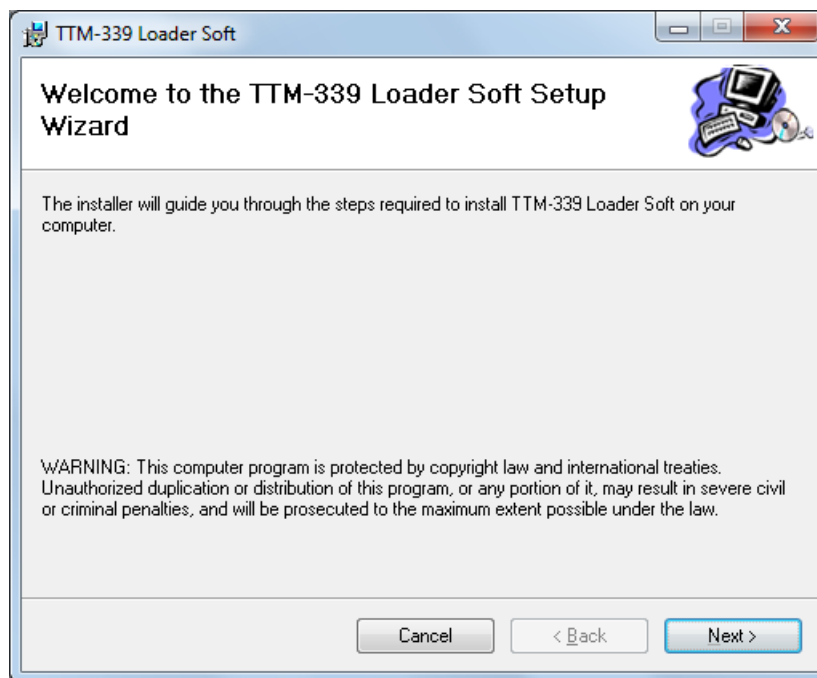


Figure3-1 "Welcome to the TTM-339 Loader Soft Setup Wizard" (setup wizard start-up screen)

When "Next" button is clicked, "Select Installation Folder" screen as shown in Figure3-2 will appear.

Confirm the installation folder and select the user who will use this application, and then click the "Next" button.

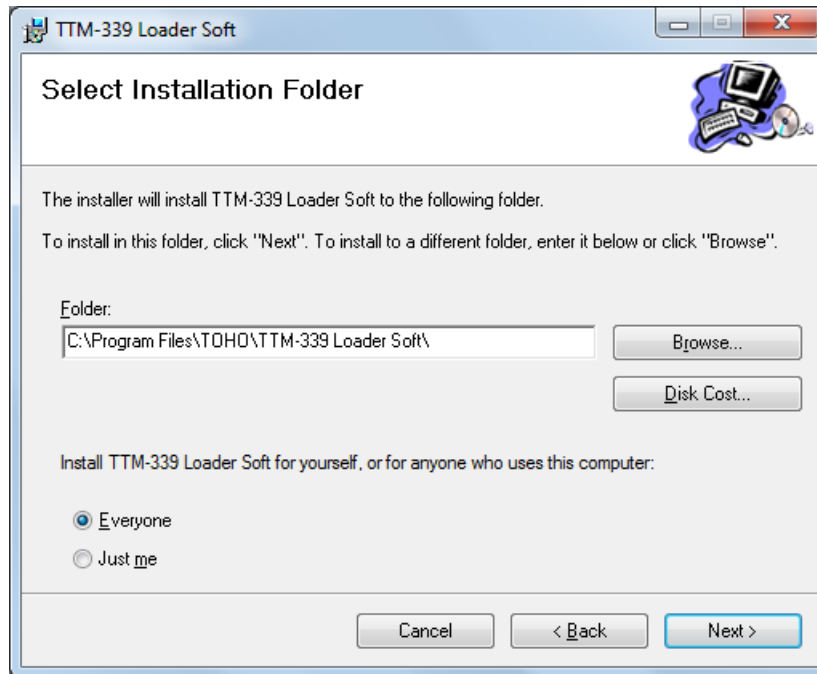


Figure3-2 "Select Installation Folder" screen

The short cut icon will appear on the start menu or on the desktop of all the user accounts when "Everyone" is selected.

The short cut will appear only for a logged-in user when "Just me" is selected.

"Confirm Installation" screen as shown in Figure3-3 will appear.
Please click "Next" button to start the installation.

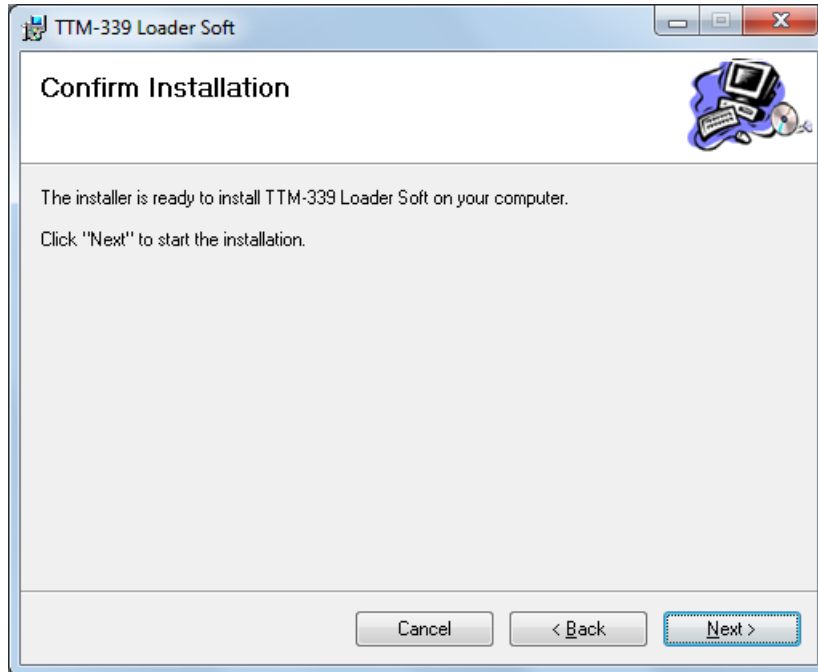


Figure3-3 "Confirm Installation" screen

Figure3-4 「User Account Control」 screen will be indicated.
Click 「YES」 button to continue the installation

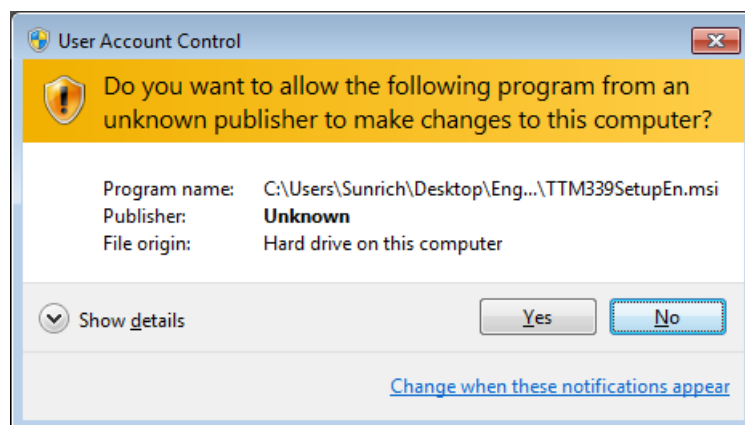


Figure3-4 User Account Control

"Installing TTM-339 Loader Soft screen as shown in Figure3-5 will appear.
Please wait for a while until the processing is done.

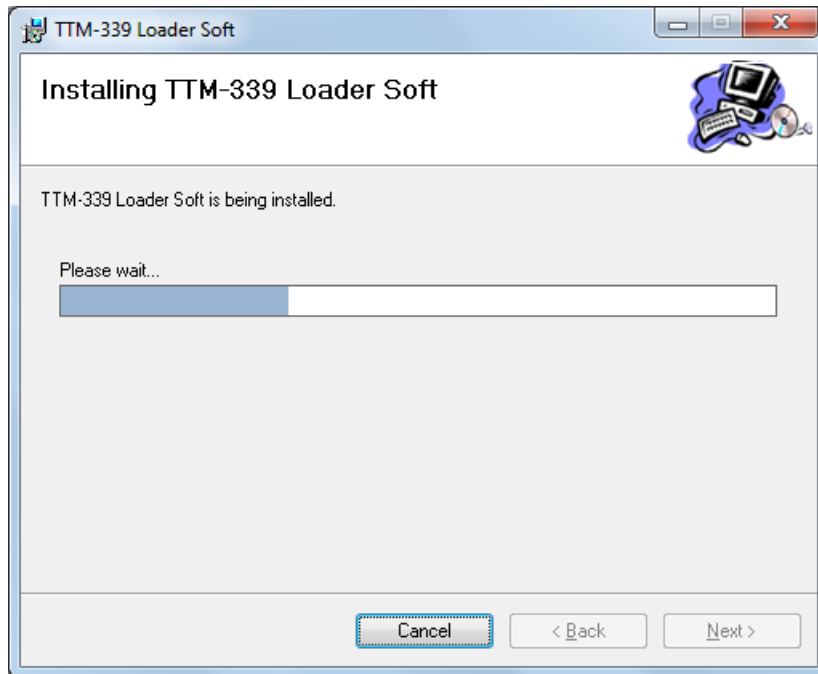


Figure3-5 "Installing TTM-339 Loader Soft" screen

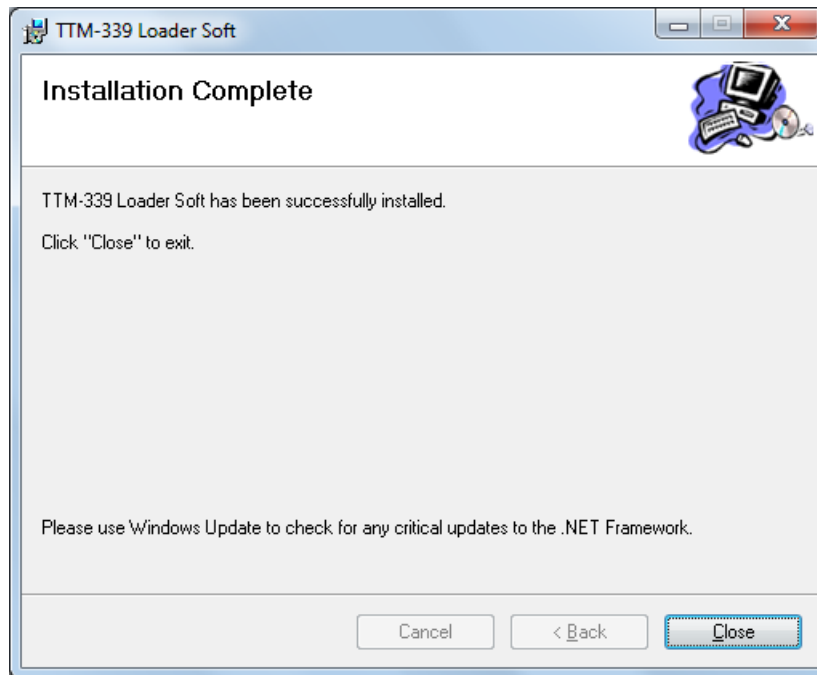


Figure3-6 "Installation complete" screen

"Installation complete" screen as shown in Figure3-6 notifies the completion of the installation. Please click "Close" button to exit the installation.

※ Using "Windows Update", check for any new important updates of .NET Framework.

For details on .NET Framework, please refer to the Microsoft Homepage.

<http://msdn.microsoft.com/en-us/netframework/default.aspx>

3.2 Re-setup

When the setup file (Setup.exe) is double-clicked on the personal computer in which the setup has been done, the "Welcome to the TTM-339 Loader Soft Setup Wizard" as shown in Figure3-7 will be appear.

In case the error message as shown in Figure3-8 appears, delete first the application software from the "Add or Remove Programs" of the "Control panel" before re-installing the software. Please refer to 3.3"Uninstallation" for details.

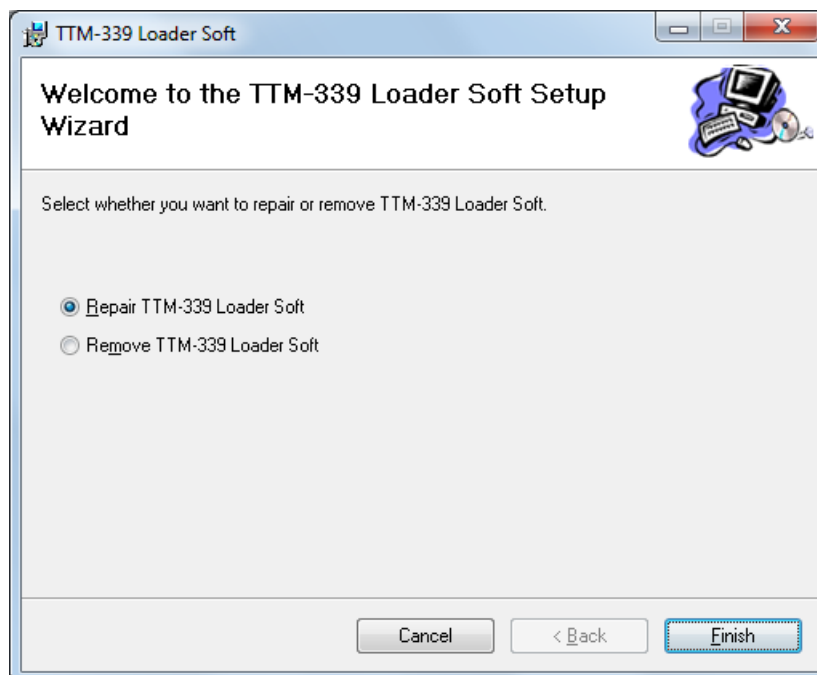


Figure3-7 TTM-339 Loader Soft Set-Up Wizard

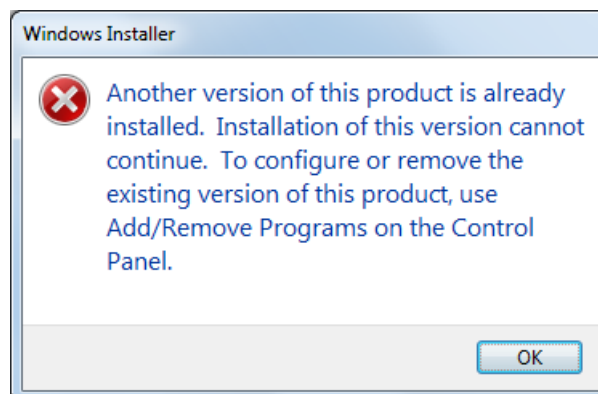


Figure3-8 Set-Up Error

①. Repair

Select "Repair of TTM-339 Loader Soft" and click "Completion" button for Repair Setup.

The screen as shown in Figure3-9 will appear and the repair setup will be executed.

When the repair setup is completed normally, the screen as shown in Figure3-10 will appear.

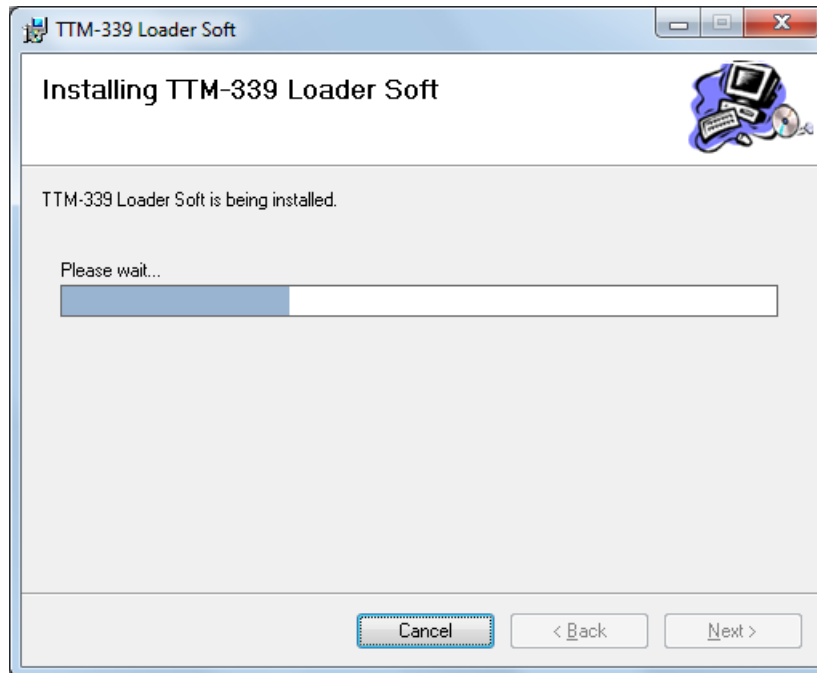


Figure3-9 Install in progress

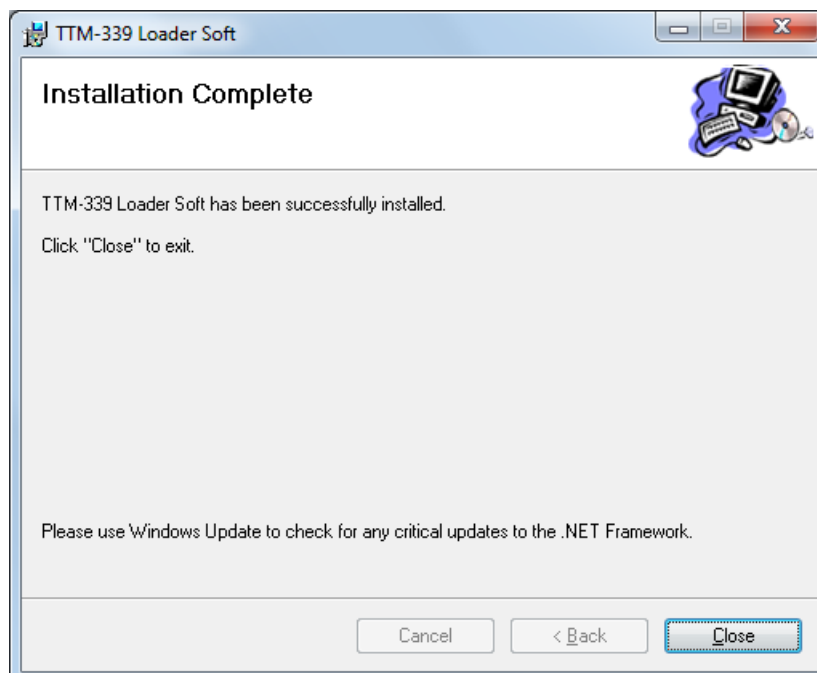


Figure3-10 Installation Completed

②. Deletion

Select "Remove TTM Series Loader" and click "Finish" button to uninstall.

The screen as shown in Figure2-11 will appear and the removal process will take place.

When deletion is completed normally, the screen as shown in Figure3-12 will appear.

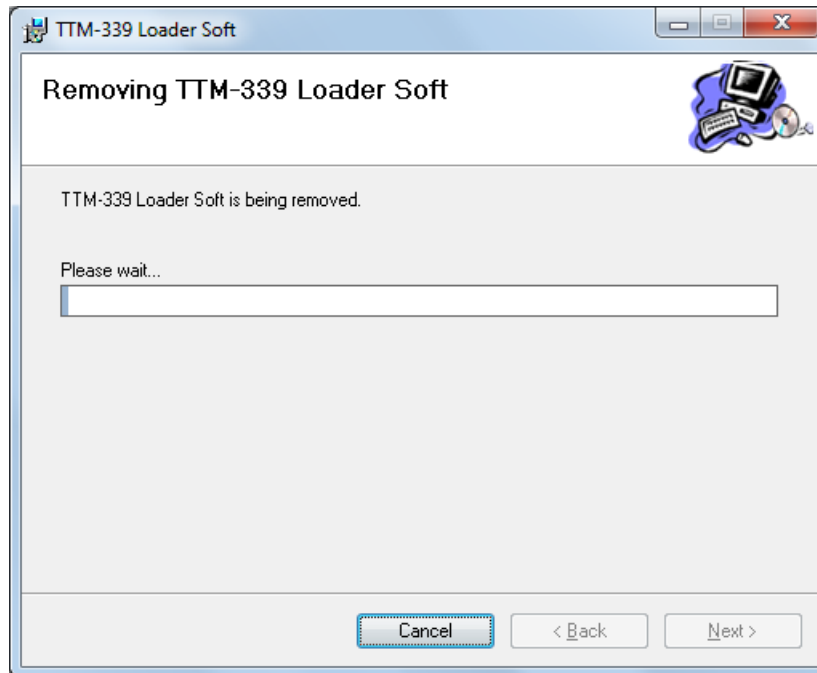


Figure3-11 Uninstallation in progress

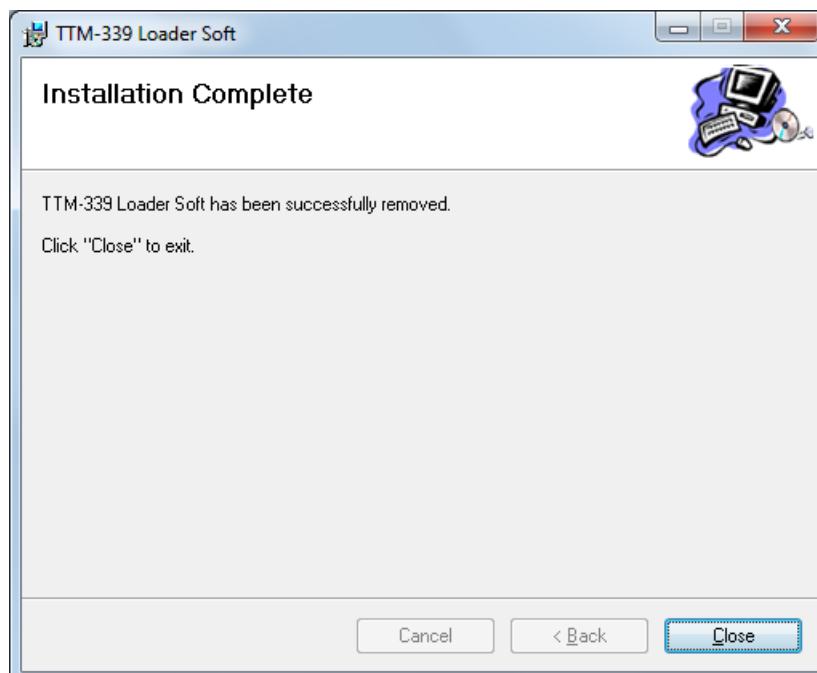


Figure3-12 Uninstallation Completed

3.3 Uninstallation

The uninstallation of the application software is executed from "Uninstall a Programs" of the control panel.

Open the control panel from the start menu and open "Uninstall Programs".

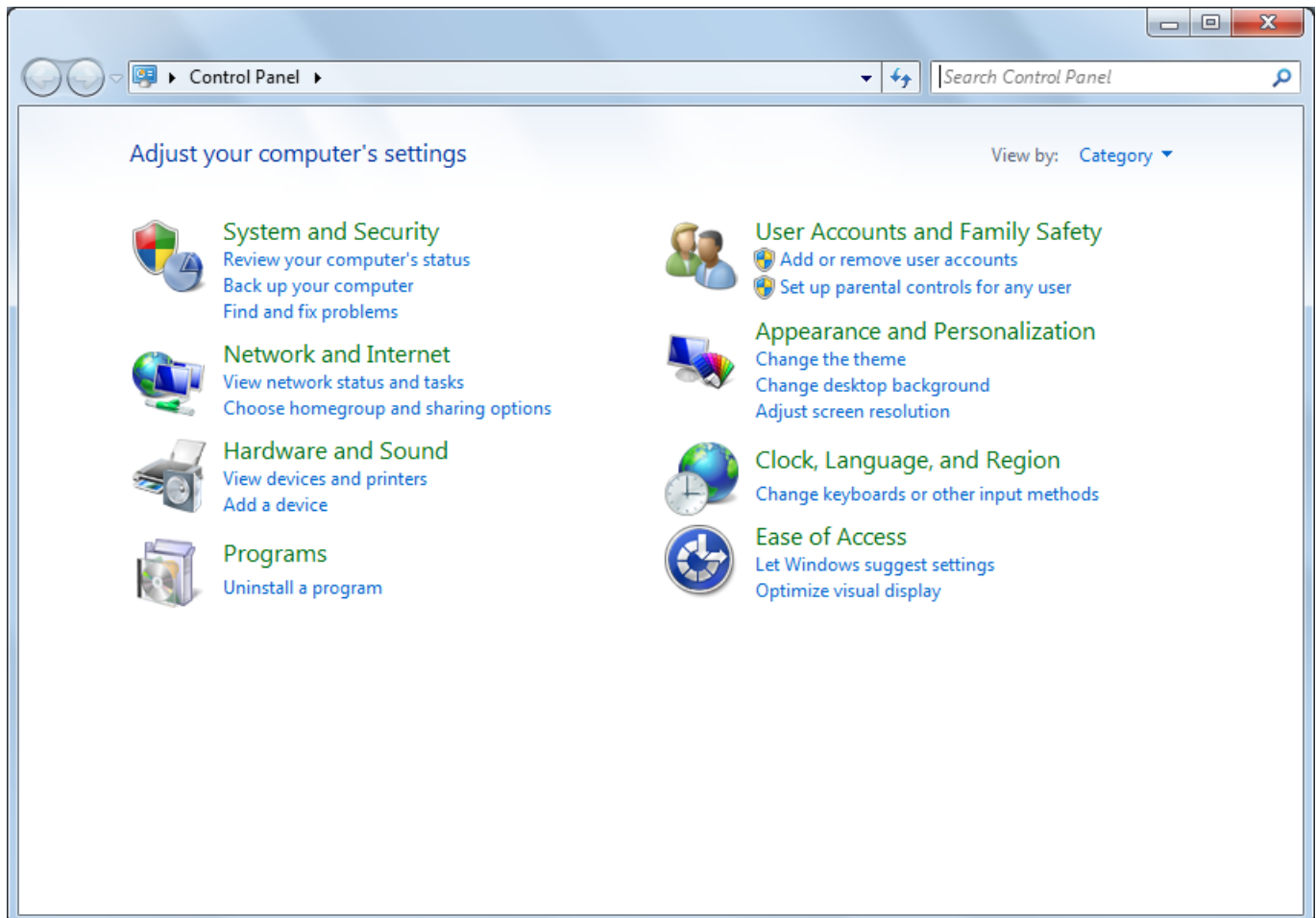


Figure3-13 Control panel

When “TTM-339 Loader Soft” is selected from Figure 3-14 「"Uninstall or change a Program" dialog」, Figure3-15 「Delete confirmation」 will be indicated.

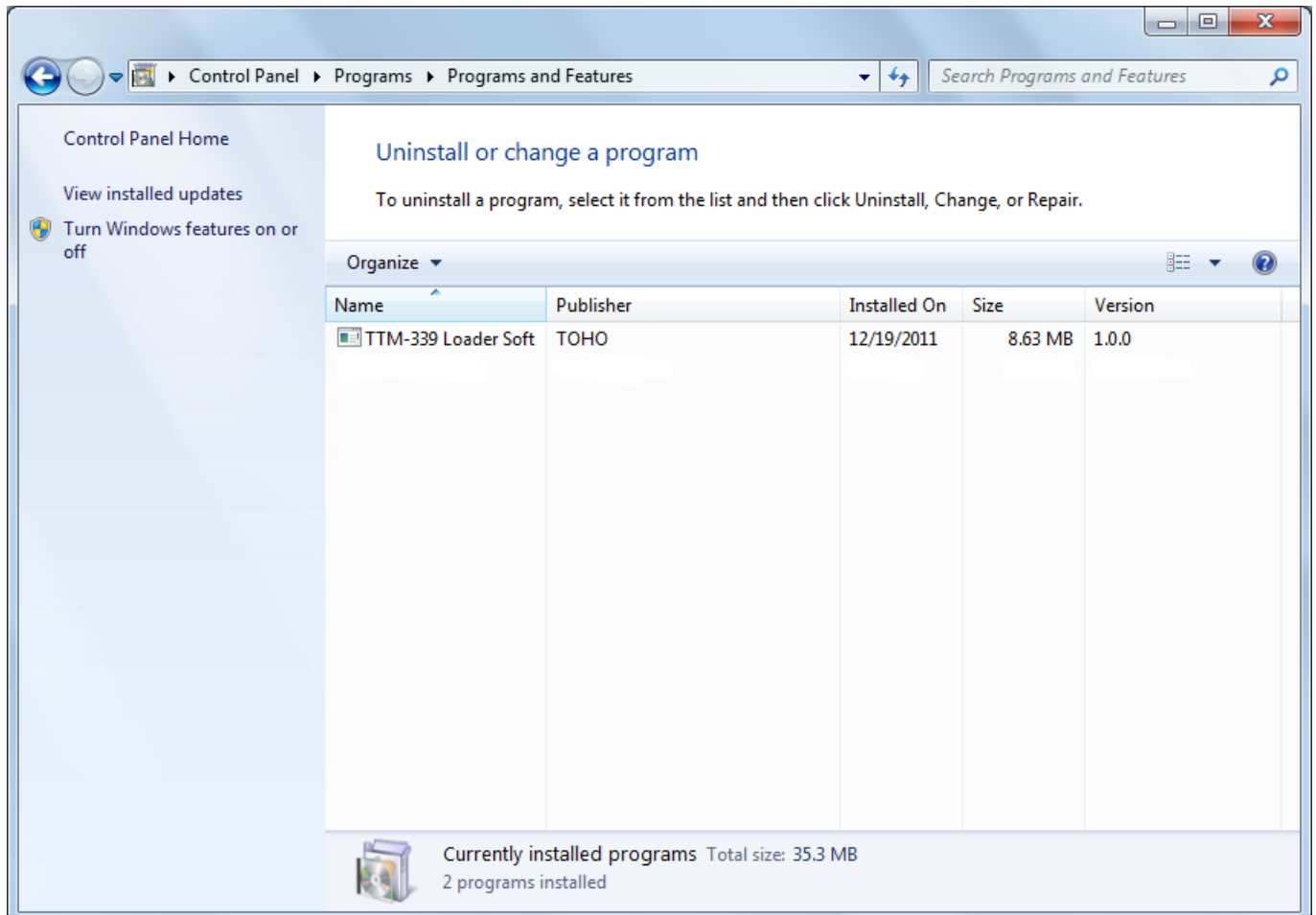


Figure3-14 "Uninstall or change a Program" dialog

Click "Yes" button to delete, click "No" button to cancel.

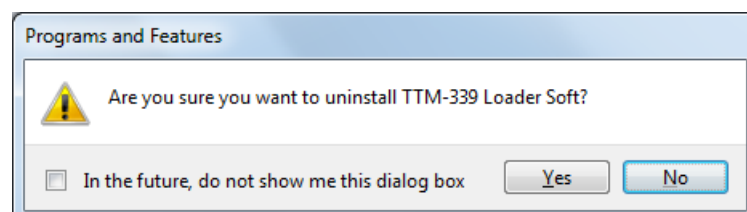


Figure3-15 Delete confirmation

Figure3-16 「User Account Control」 screen will be indicated.

Click 「Yes」 button to continue the installation.

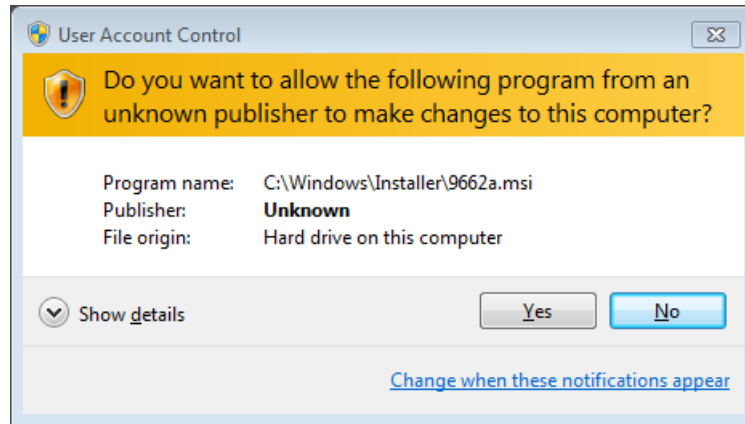


Figure3-16 User Account Control

When “Yes” is selected, message as shown in Figure3-17 will appear to show the status.

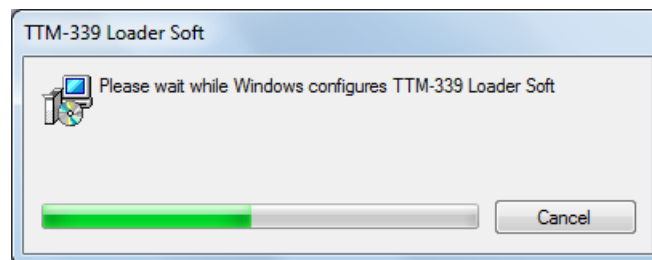


Figure3-17 Uninstallation status

Figure3-17 will disappear automatically when the uninstallation procedure is completed.

Confirm that item of "TTM-339 Loader Soft" has been deleted from Figure3-14 " Uninstall or change a Program ".

Moreover, the short-cut icon at the start menu and desktop will also be deleted.

4. Method of installing ".NET Framework3.5" manually

To make the TTM-339 Loader Soft, it is necessary for the computer to have “.Net Framework3.5”. Some computers have the .NET Framework 3.5 installed already. To check whether this component has been installed or not, open control panel, then open add/delete program.

Please see the homepage of Microsoft regarding the details of .NET Framework 3.5.

<http://msdn.microsoft.com/en-us/netframework/default.aspx>

- ① Microsoft .NET Framework Version 3.5 Package that can be redistributed (x86)

<http://www.microsoft.com/download/en/details.aspx?id=22>

dotNetFx35setup.exe

Refer to following URL for the details of setup method.

Moreover, these setup files can be downloaded from the following URL.

<http://www.microsoft.com/downloads/details.aspx?familyid=0856EACB-4362-4B0D-8EDD-AAB15C5E04F5&displaylang=en>

NOTE: "Windows Installer 3.1" may be necessary to install .NET Framework 3.5. Install Windows Installer 3.1 in case the setup is interrupted when "dotNetFx35setup.exe" is executed.

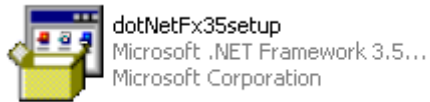
WindowsInstaller-KB893803-v2-x86.exe

Refer to the following URL for details of the setup method.

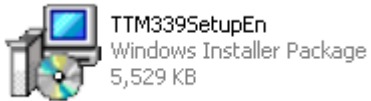
Moreover, these setup files can be downloaded from the following URL.

<http://www.microsoft.com/downloads/details.aspx?displaylang=en&FamilyID=889482fc-5f56-4a38-b838-de776fd4138c>

4.1 Setup flow



Execution of "dotNetFx35setup.exe" file.
Double-click the icon to start.



Execution of "TTM339SetupEn.msi" file.
Double-click the icon to start.

* In case your personal computer is already installed with .Net Framework3.5, only the installation of the Loader Software Setup (LoaderSetup.msi) is needed.

4.2 "dotNetFx35setup.exe" Installation

- ①. When dotnetfx.exe is double-clicked, the setup wizard will start-up.

Setup according to the instruction on the screen.

Figure4-1 「Extracting file display」 will be displayed. Wait until the process is completed.

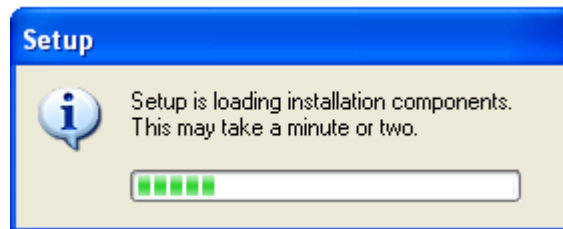


Figure4-1 Extracting file display

- ②. Take note of the License Agreement and then click "Install" after checking "I accept the terms of the License Agreement".

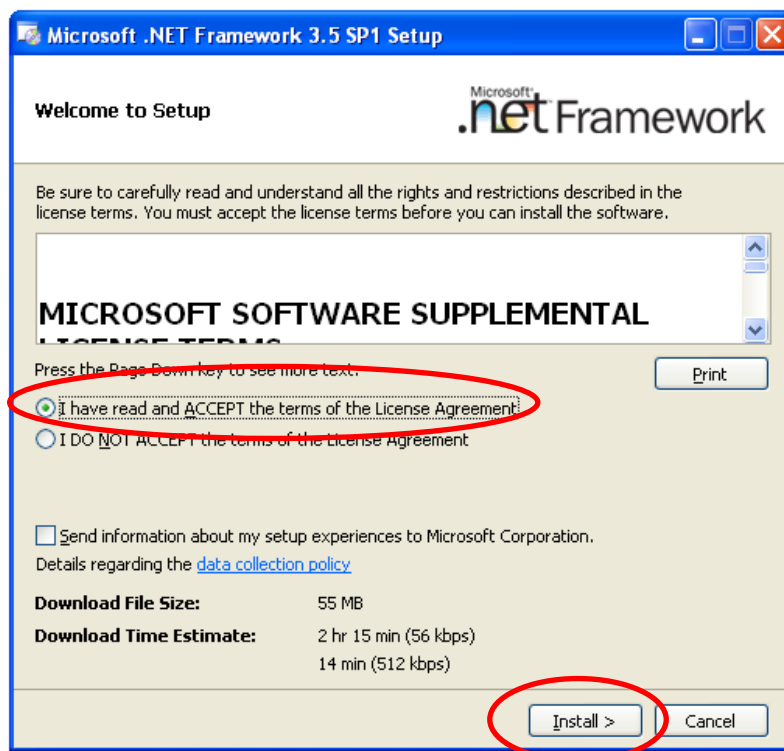


Figure4-2 End-User License Agreement (Confirmation screen of License Agreement)

- ③. The installation will start when "Install" is clicked.
Wait for a while until the installation is completed (while Figure4-3 and Figure4-4 are being displayed).

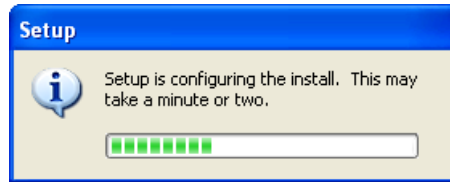


Figure4-3 Installation preparation display

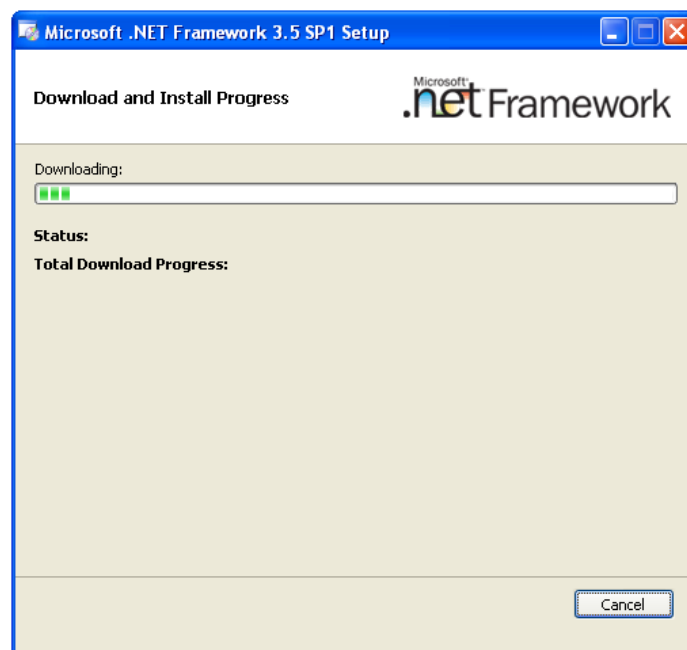


Figure4-4 Installing components screen

※In case a screen as shown in Figure4-5 appears while waiting for the completion of installation, there is a possibility that the setup has previously been done. In this case, proceed to setup for the next program.

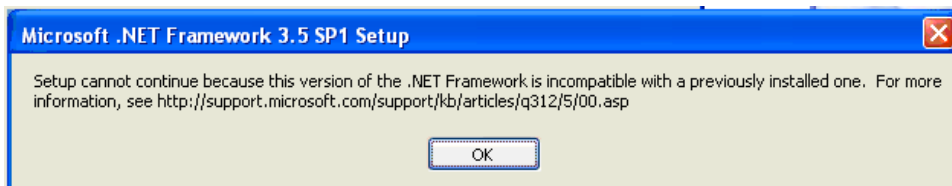


Figure4-5 Display appeared during installation

- ④. When the installation is completed, a screen as shown in Figure4-6 will appear, so click "Finish" button.

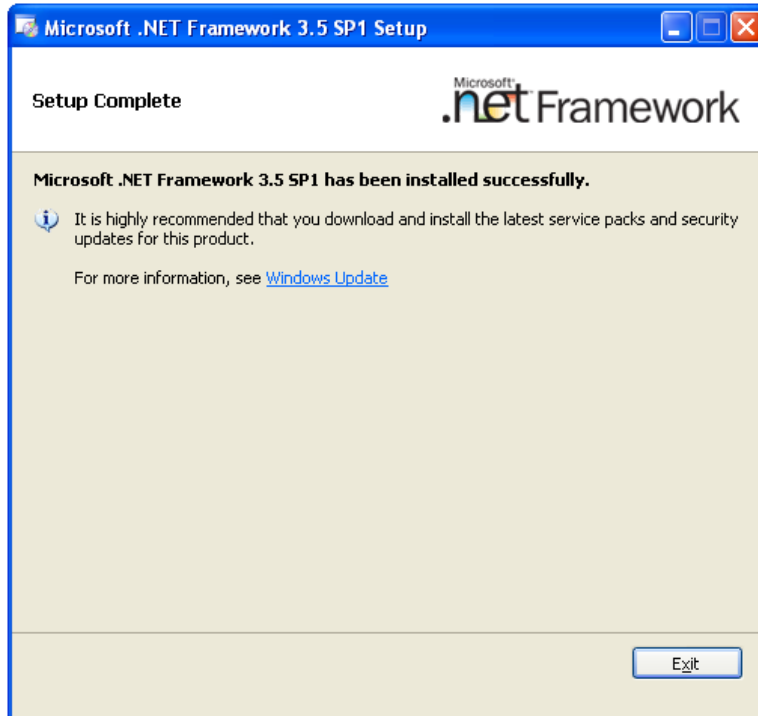


Figure4-6 "Setup Complete" Screen

※Using “Windows Update”, check for any new important updates of .NET Framework.
For details on .NET Framework3.5, please refer to the Microsoft Homepage.
<http://msdn.microsoft.com/en-us/netframework/default.aspx>

Memo

TTM -339 Loader software

Setup manual

Rev01.00 issue on December 19, 2011

ISSUED BY

TOHO ELECTRONICS INC.

1-13-21, Tanashioda, Chuo-ku, Sagamihara-shi, Kanagawa

252-0245 JAPAN

TEL +81-42-777-3316

FAX +81-42-777-3751
