

TTM series loader software

Setup manual

TOHO ELECTRONICS INC.

1. Before installing the application.....	1
1.1 Introduction	1
1.2 System operating condition.....	1
1.3 OS Confirmation	2
1.4 .NET Framework 2.0 confirmation	2
1.5 Acrobat Reader DC confirmation	2
2. Setup of application software	3
2.1 Setup	3
2.2 Re-setup	7
2.3 Uninstallation	10
3. Method of installing ".NET Framework2.0" manually.....	14
3.1 Setup flow	14
3.2 Method of installing Microsoft .NET Framework 3.5 Service Pack 1	15
3.3 Installation from "Turn Windows features ON or OFF" of .NET Framework 3.5.....	18

1. Before installing the application

1.1 Introduction

This manual is created on the assumption that the operation system (OS) is Windows 10.

If the OS is different, please note that the sample screen will be slightly different.

1.2 System operating condition

Be sure to execute this application by user account with administrator authority.

It may not work properly with restricted user account.

In addition, to start this application, one or more serial ports must be recognized on the PC. Please refer to the Device Manager to confirm the serial port of your PC.

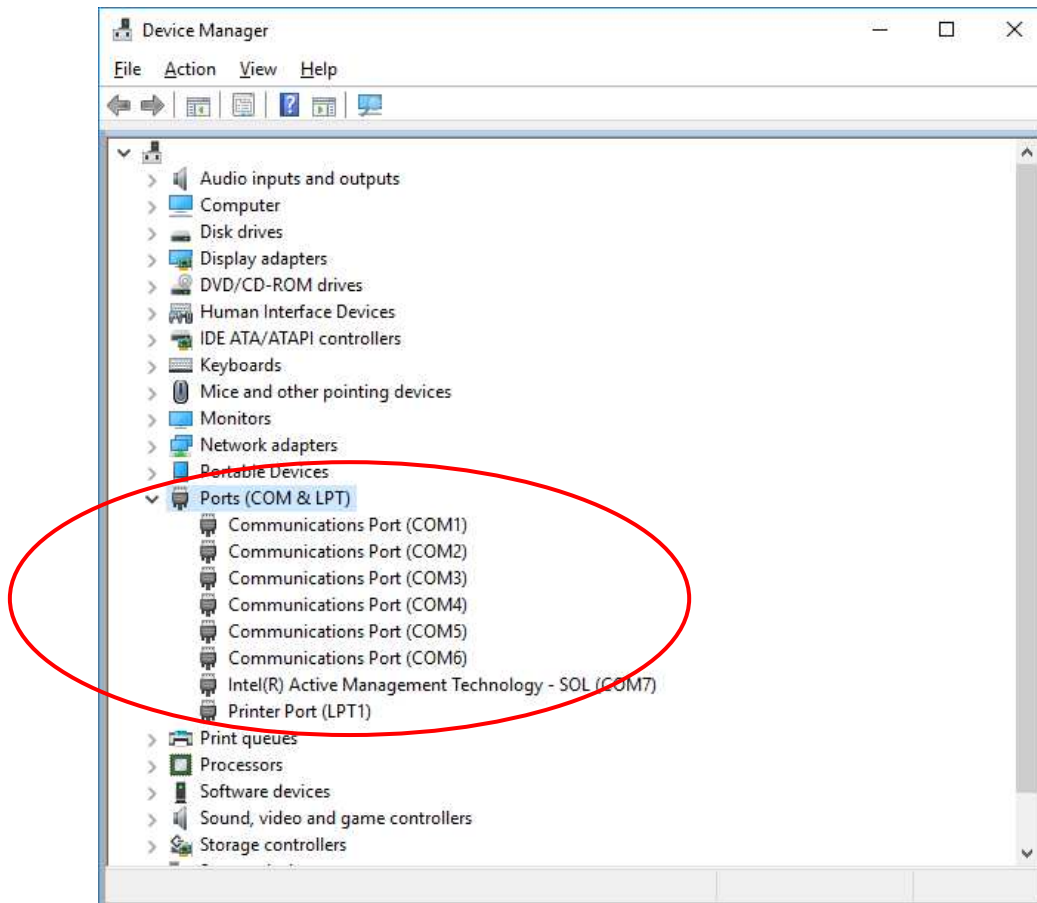


Figure.1-1 Device Manager

1.3 OS Confirmation

The PC to which the software will be installed must have either Windows 7, Windows 8.1 or Windows 10 properly set up.

For Windows 7, we recommend that the update be made to Windows 7 Service Pack 1 or later.

For detailed information on how to set up Windows 7 Service Pack 1, please refer to the following URL.

<http://support.microsoft.com/kb/976932>

1.4 .NET Framework 2.0 confirmation

If your computer is Windows 7, confirmation of required components is not necessary.

".NET Framework 3.5" is included in Windows 7. All functions of ".NET Framework 2.0" required to run this application are included.

You need to set up ".NET Framework 2.0" as a required component only when your PC is Windows 8.1 or Windows 10 and ".NET Framework 2.0" is not installed.

When manually setting up ".NET Framework 2.0", refer to 3. "How to install" .NET Framework 2.0 " Please refer to 3. "Method of installing ".NET Framework2.0" manually" to do setup manually.

1.5 Acrobat Reader DC confirmation

When opening a help file with this application, the software (Acrobat Reader DC) for opening PDF on your PC must be installed.

Please refer to the following URL for downloading Acrobat Reader DC.

<https://get.adobe.com/reader/>

2. Setup of application software

2.1 Setup

When the setup file (Setup.exe) is double-clicked, the setup wizard will start-up.
Please setup according to the instruction on the screen.

If the required components have not been set up on the computer, [Figure 2-1] “Setup Request Dialog of .NET Framework 2.0” will be launched.

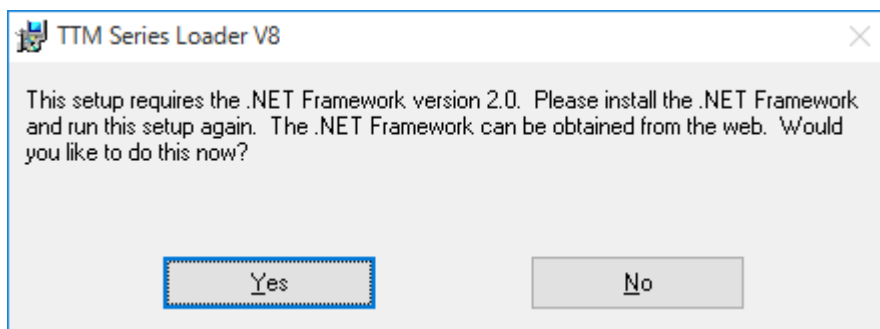


Figure 2-1 Setup Request Dialog of .NET Framework 2.0

If setup of the required components is complete or if setup has already been done, [Figure 2-2] “TTM Series Loader Setup Wizard” will be launched.

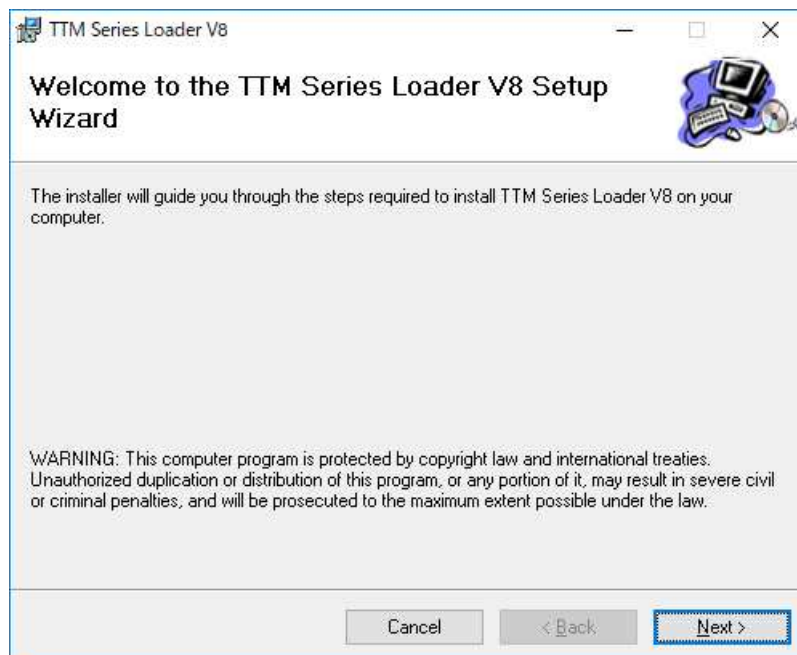


Figure 2-2 TTM Series Loader Setup Wizard

When you click the "Next" button, [Figure 2-3] "Select Installation Folder" is displayed.
Confirm the installation folder and set the user of this application, and click the "Next" button.

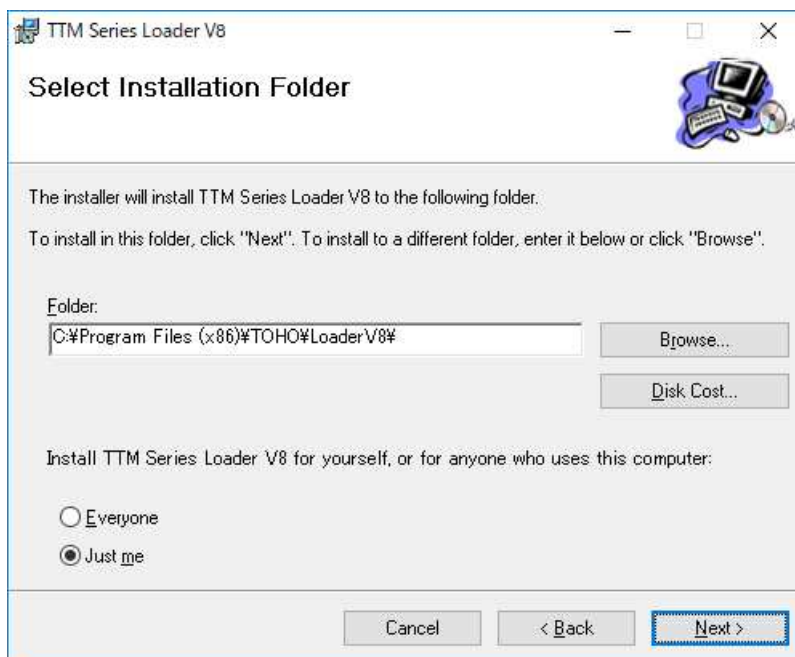


Figure 2-3 Select Installation Folder

If "Everyone" is selected, the shortcut will be set in the start menu and desktop of all user accounts.
When "Just me" is selected, the shortcut is set in the start menu and desktop of currently logged-in user.

[Figure 2-4] "Confirm Installation" is displayed. Click the "Next" button to start the installation.

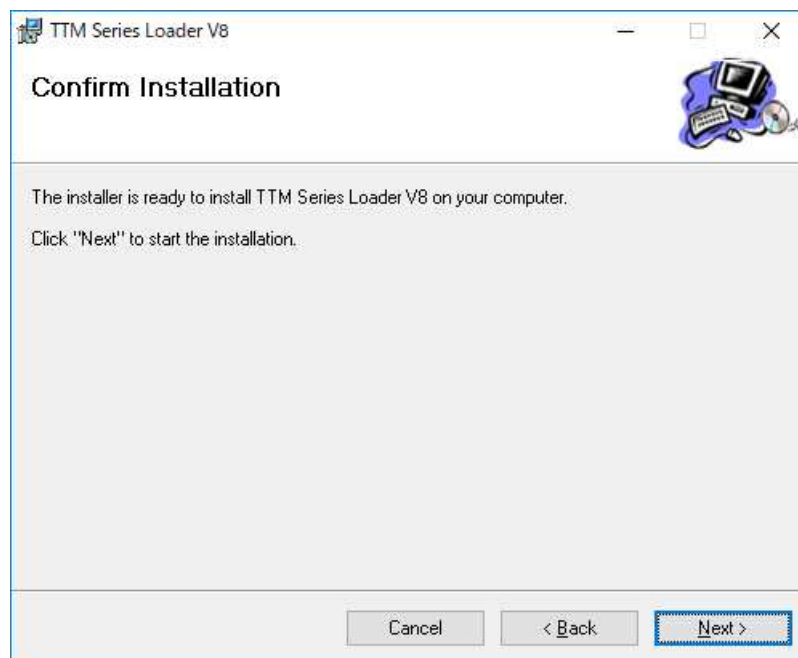


Figure 2-4 Confirm Installation

[Figure 2-5] "Installation Progress" is displayed. Please wait for a while until the process is over.

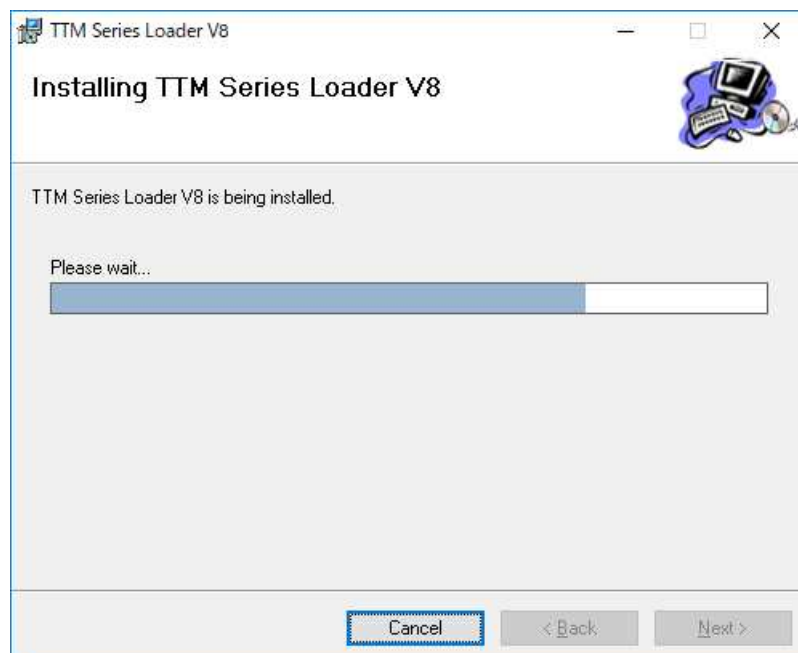


Figure 2-5 Installation Progress

When installation is complete, [Figure 2-6] "Installation Complete" is displayed.
Click the "Close" button to finish the installation.

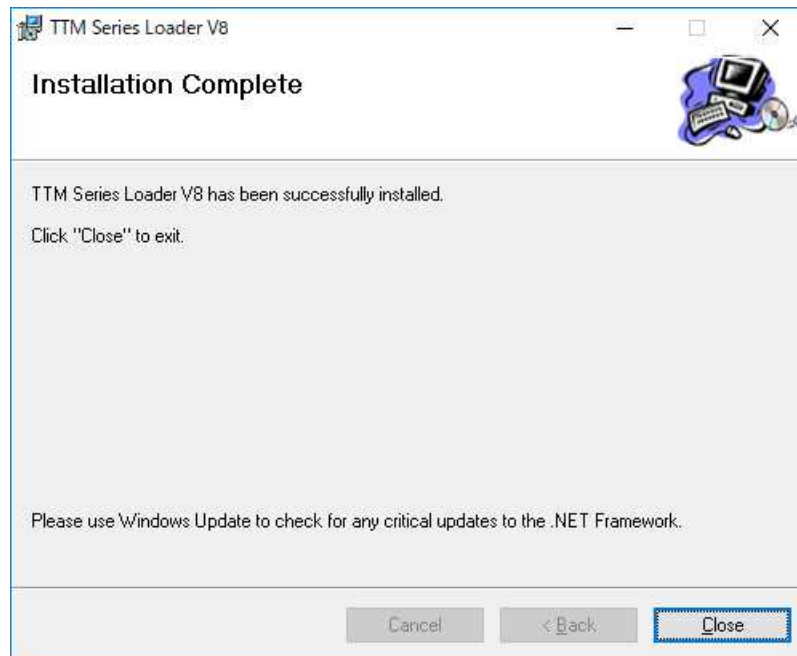


Figure2-6 Installation Complete

Note: Using "Windows Update", check for any new important updates of .NET Framework.

2.2 Re-setup

When the setup file (Setup.exe) is double-clicked on the personal computer in which the setup has been done, "TTM Series Loader Setup Wizard" as shown in [Figure2-7] will appear.

In case the error message as shown in [Figure 2-8] "Set-Up Error" appears, delete first the application software from the "Programs and Features" of the "Control panel" before re-installing the software.

Please refer to 2.3"Uninstallation" for details.

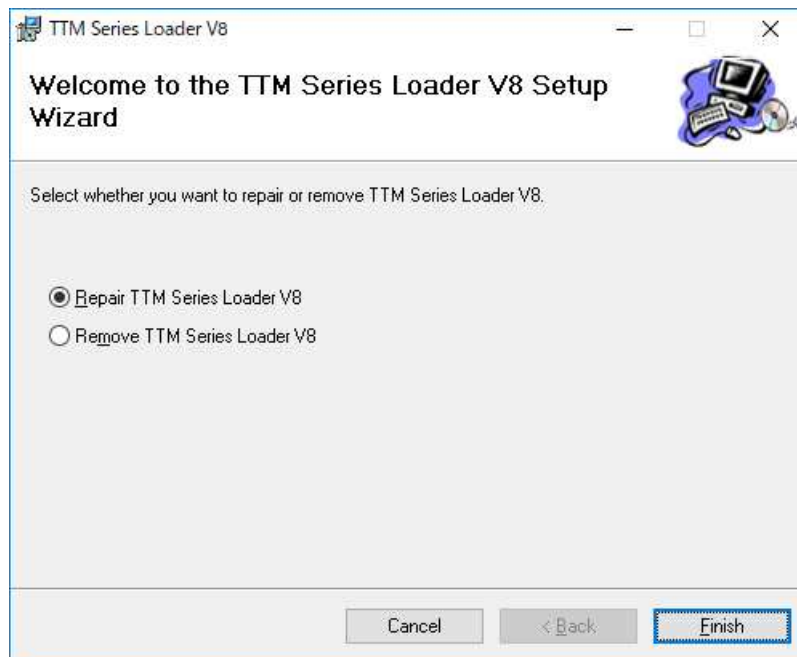


Figure2-7 TTM Series Loader Set-Up Wizard

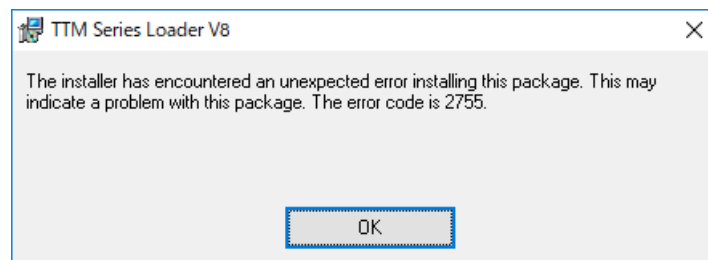


Figure2-8 Set-Up Error

(1) Repair

Select "Repair TTM Series Loader V8" and click "Finish" button for Repair Setup.

The screen as shown in [Figure 2-9] will appear and the repair setup will be executed.

When the repair setup is completed normally, the screen as shown in [Figure 2-10] will appear.

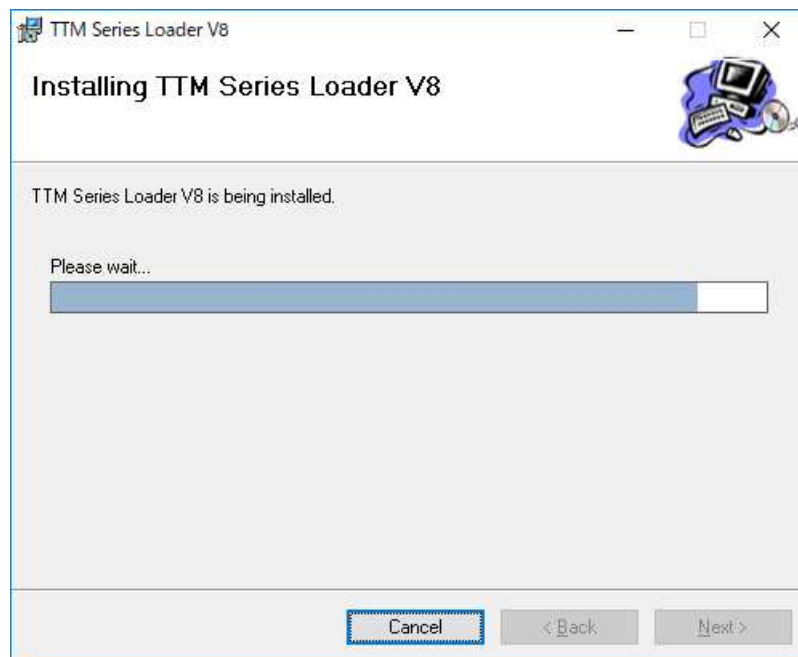


Figure2-9 Install in progress

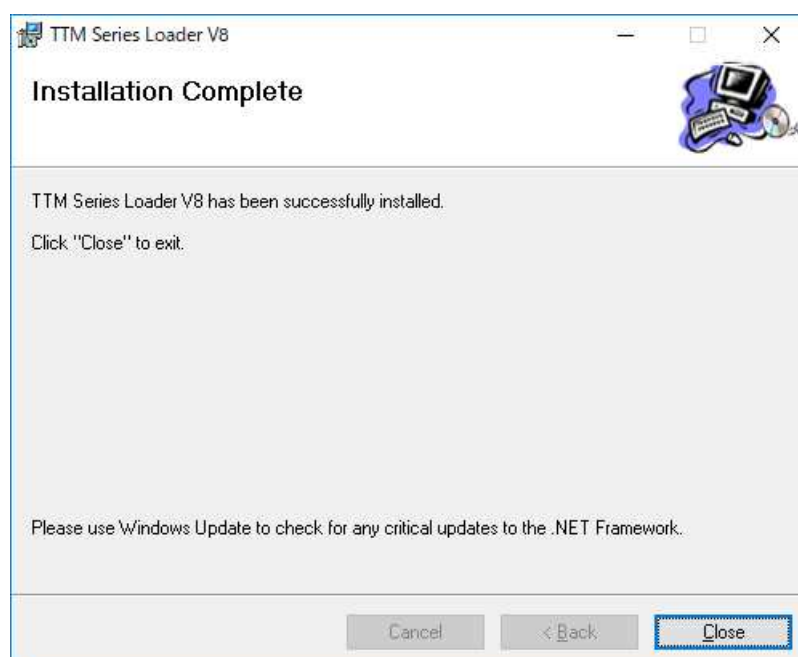


Figure2-10 Installation Complete

(2) Deletion

Select "Remove TTM Series Loader V8" and click "Finish" button to uninstall.

The screen as shown in [Figure 2-11] will appear and the removal process will take place.

When removal process is completed normally, the screen as shown in [Figure 2-12] will appear.

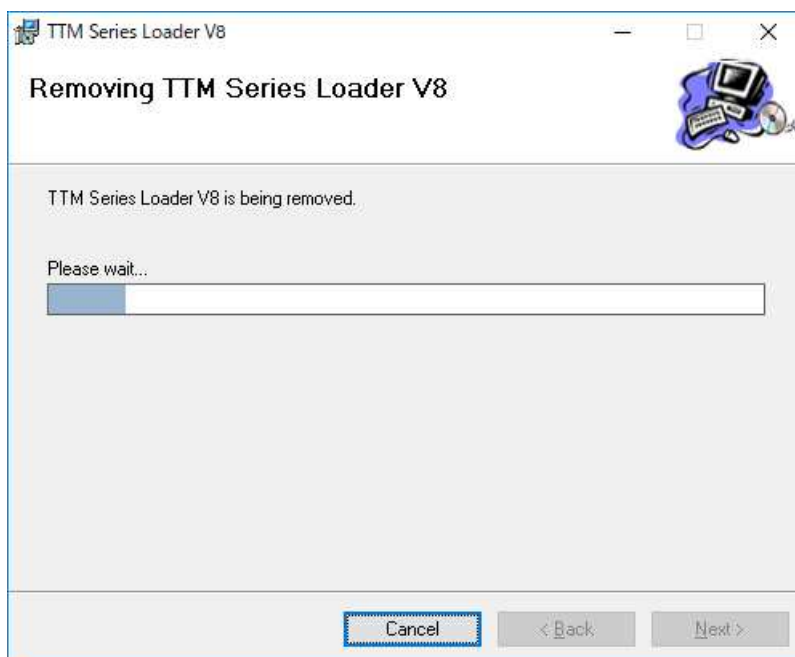


Figure2-11 Uninstallation in progress

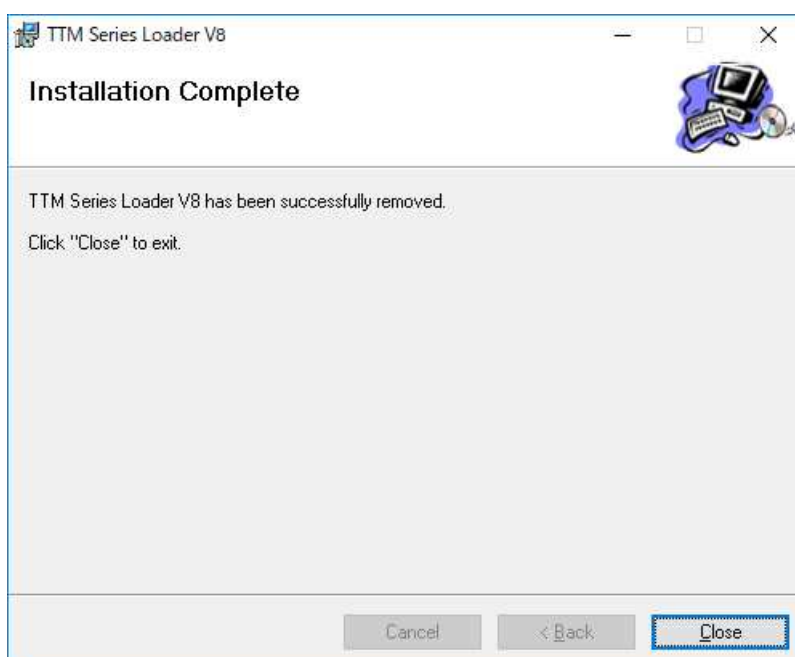


Figure2-12 Uninstallation Completed

2.3 Uninstallation

Uninstall this application from "Programs and Features" in [Figure 2-13] "Control Panel".

Open the Control Panel from the Start Menu and open "Programs and Features".

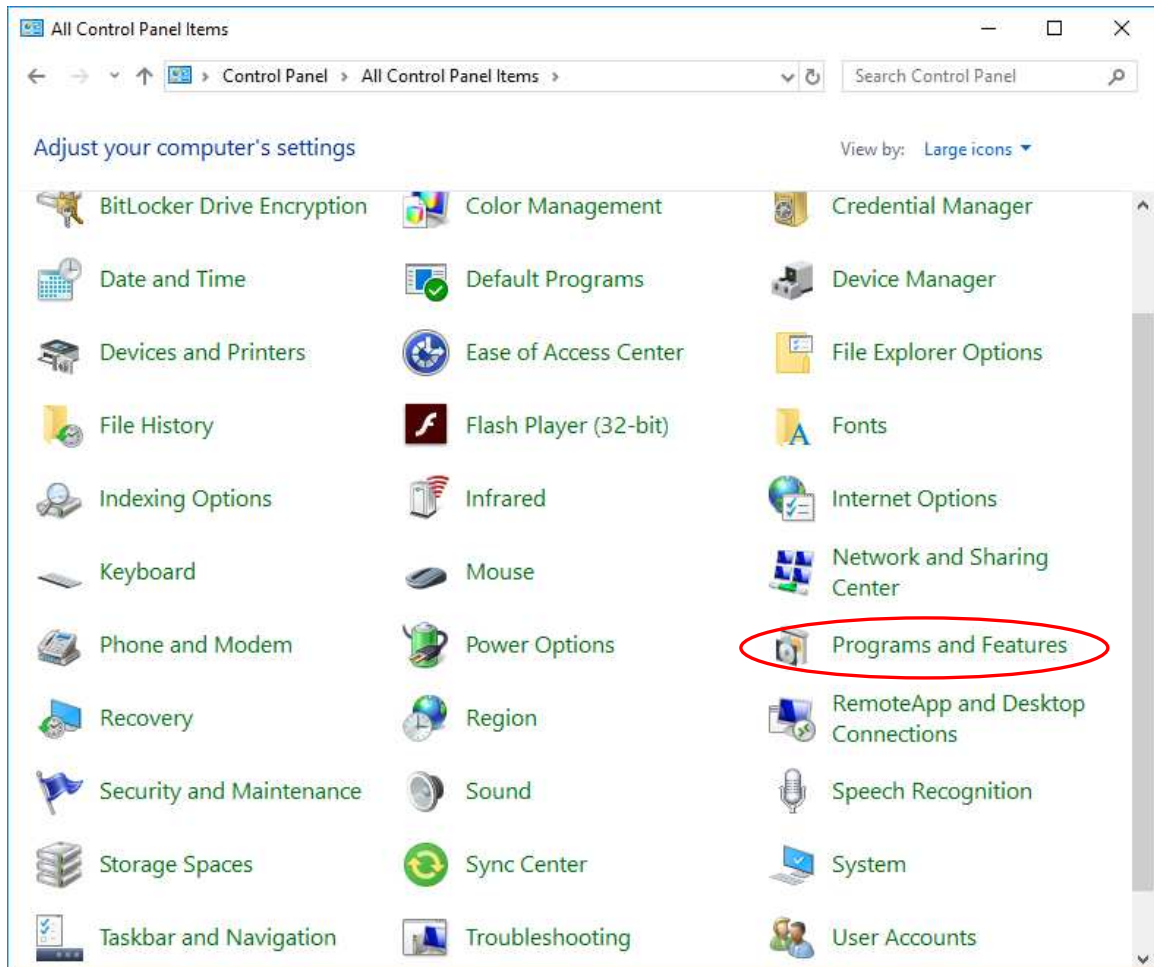


Figure2-13 Control Panel (icons)

If the display of Control Panel is "Category", open "Uninstall a program".

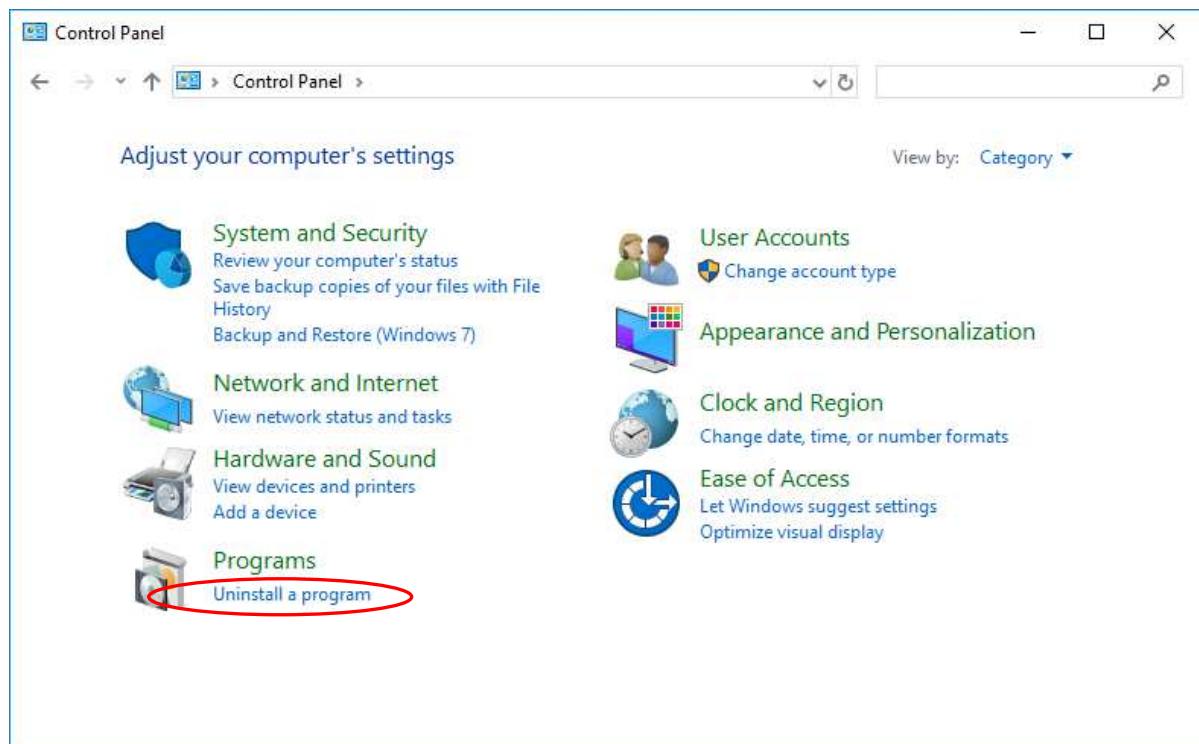


Figure 2-14 Control Panel (Category)

[Figure 2-15] From “Programs and Features”, select “TTM Series Loader V8”.

Double-click “TTM Series Loader V8”, and [Figure 2-16] “Uninstallation Confirmation” will be displayed.

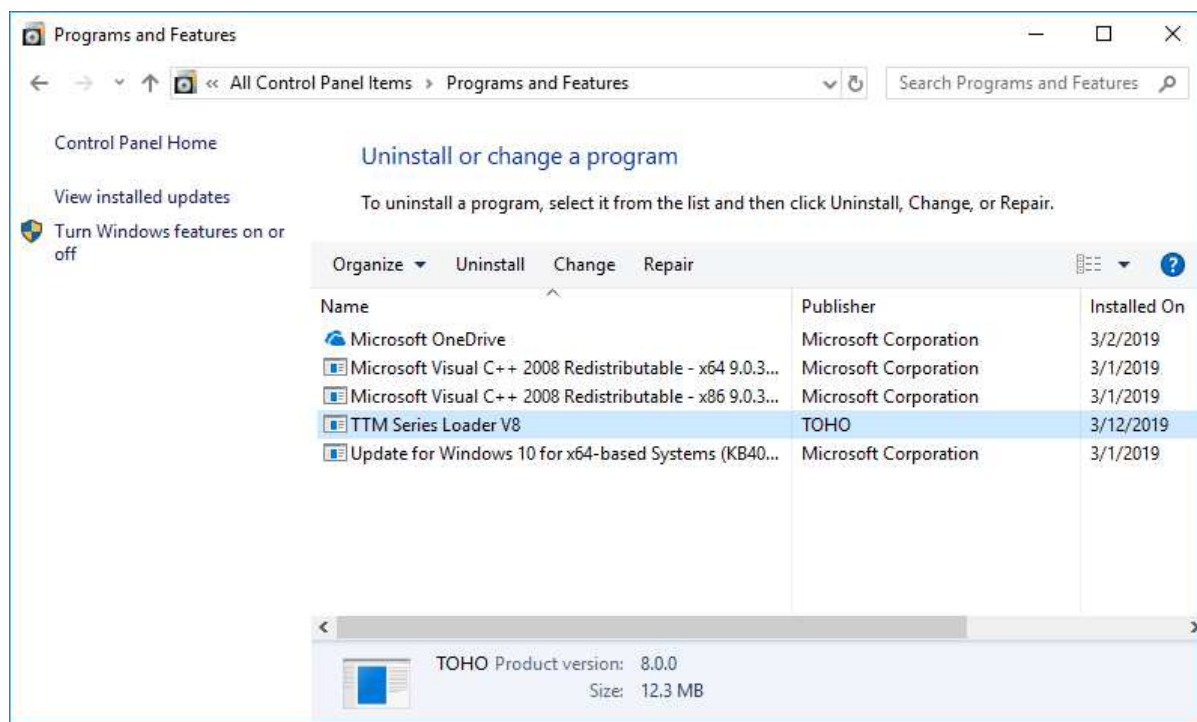


Figure 2-15 Programs and Features

Click "Yes" to uninstall or "No" to cancel.

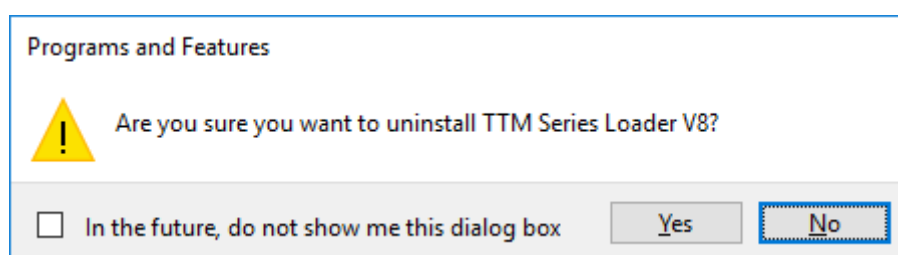


Figure 2-16 Uninstallation confirmation

When uninstalling, [Figure 2-17] "Uninstall Progress" is displayed.

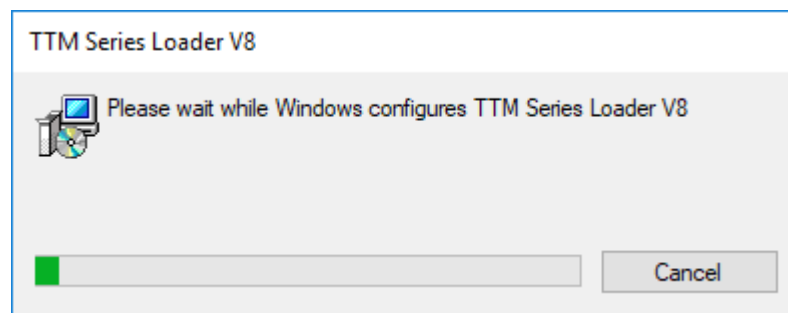


Figure 2-17 Uninstall Progress

When uninstallation is complete, [Figure 2-17] "Uninstall Progress" will disappear automatically.

Confirm that the item "TTM Series Loader V8" is deleted from [Figure 2-15] "Program and Feature".
The start menu and desktop shortcuts are also deleted.

3. Method of installing ".NET Framework2.0" manually

".NET Framework 2.0" is necessary for TOHO Loader to work.

Depending on your PC, it may already be installed, so please check.

You can check from the "program and function" of the control panel.

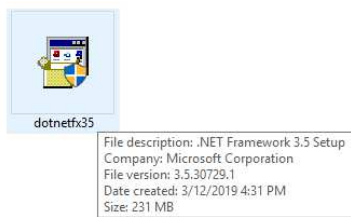
If ".NET Framework 3.0" or ".NET Framework 3.5" is already installed, the contents of ".NET Framework 2.0" are included. Installation of ".NET Framework 2.0" is unnecessary.

This setup manual shows how to install ".NET Framework 3.5".

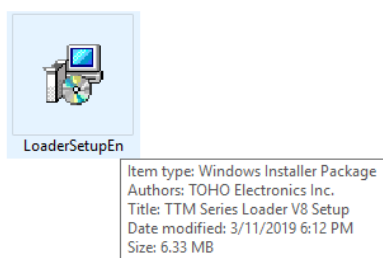
Microsoft .NET Framework 3.5 Service Pack 1 (Full Package)

<https://www.microsoft.com/en-US/download/details.aspx?id=25150>

3.1 Setup flow



Execution of "dotnetfx35.exe" file.
Double-click the icon to start.



Execution of "LoaderSetupEn.msi" file.
Double-click the icon to start.

* If ".Net Framework 2.0", ".Net Framework 3.0", ".Net Framework 3.5" have already been installed, you can use it only by installing the Loader software setup (LoaderSetupEn.msi).

3.2 Method of installing Microsoft .NET Framework 3.5 Service Pack 1

Double-click "Dotnetfx35.exe" to start the setup wizard.

Follow the on-screen instructions for setup.

Select "Download and install this feature".

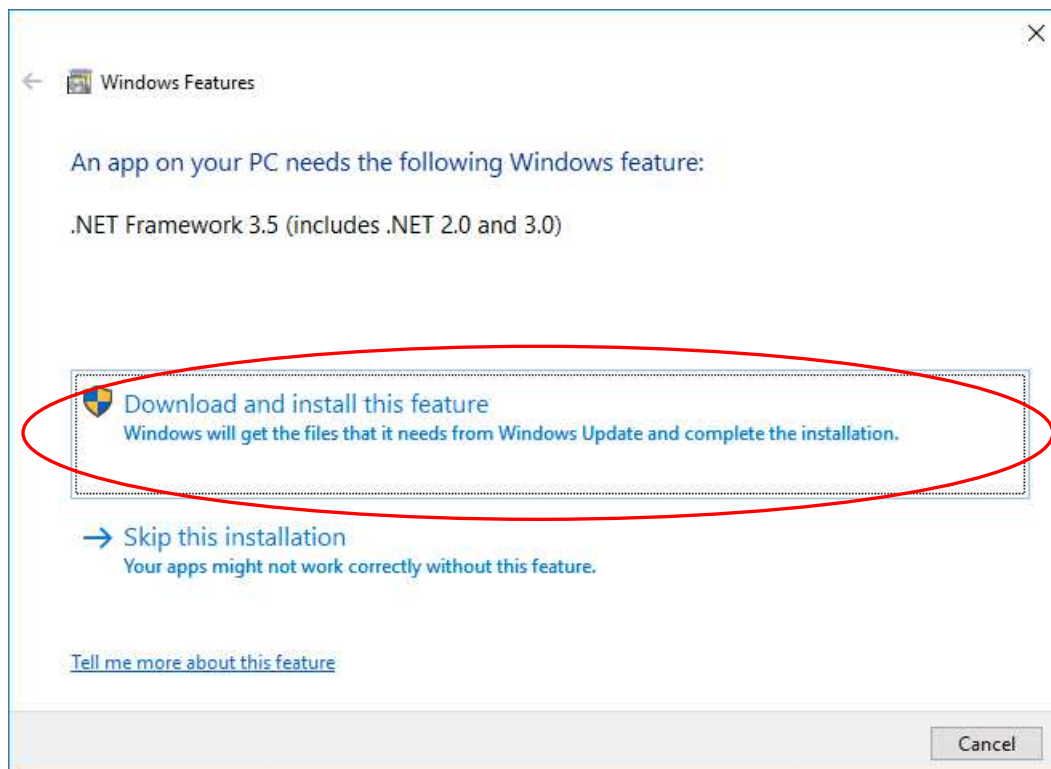


Figure 3-1 Setup wizard

The required file download will be performed. Please wait.

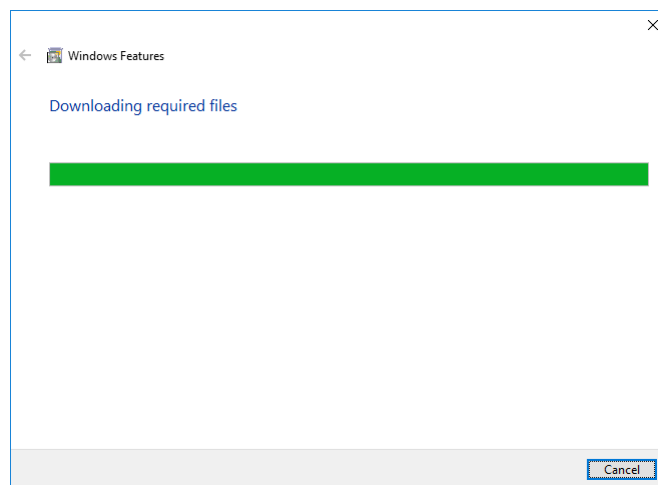


Figure 3-2 Downloading required files

Once the necessary files have been downloaded, the installation will be performed. Please wait.

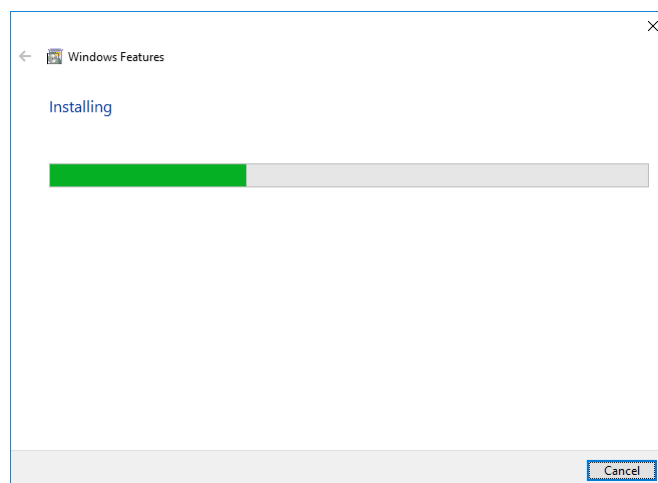


Figure 3-3 Installing

Installation of .NET Framework 3.5 is complete. Click the "Close" button.

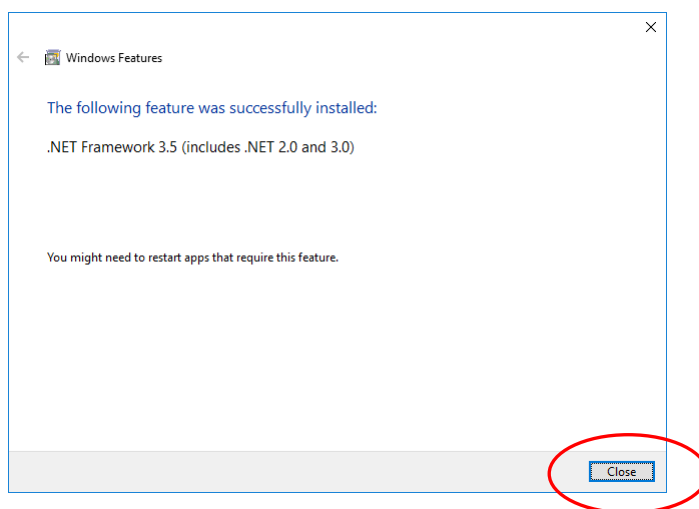


Figure 3-4 Installation complete

3.3 Installation from "Turn Windows features ON or OFF" of .NET Framework 3.5

It describes separately how to install ".NET Framework 3.5" from Control Panel without using "Dotnetfx35.exe".

Open the Control Panel from the Start Menu and open "Programs and Features".

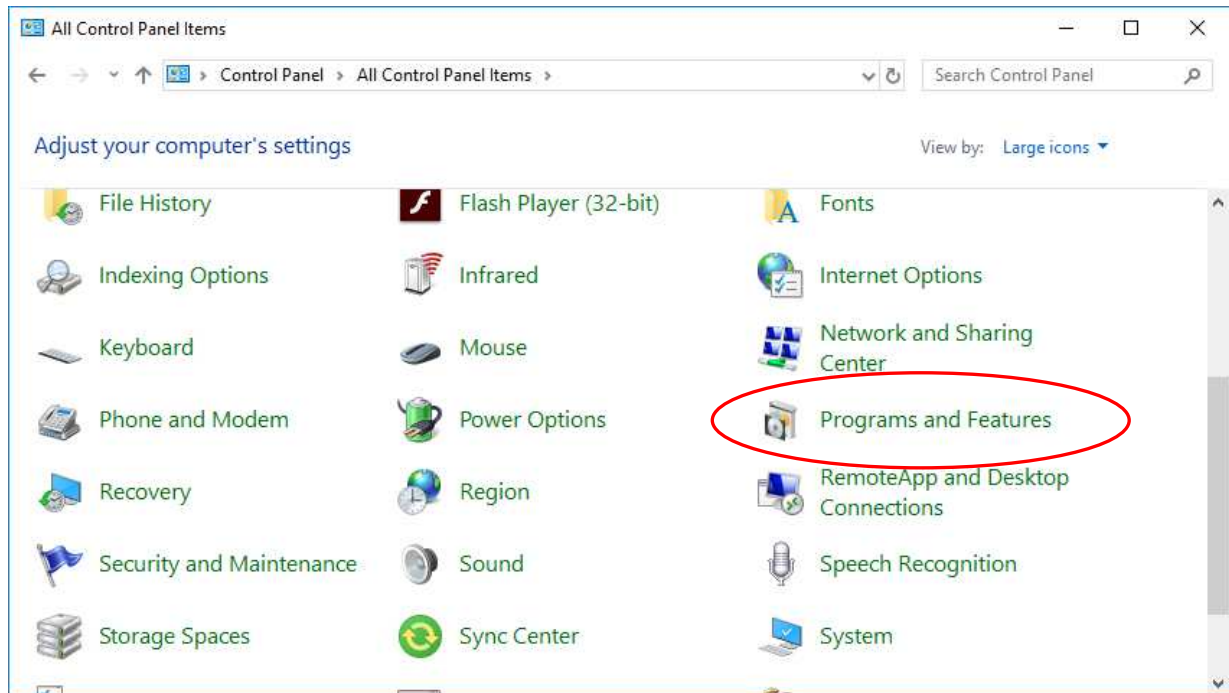


Figure3-5 Control Panel

Open "Turn Windows features on or off" from the "Programs and Features".

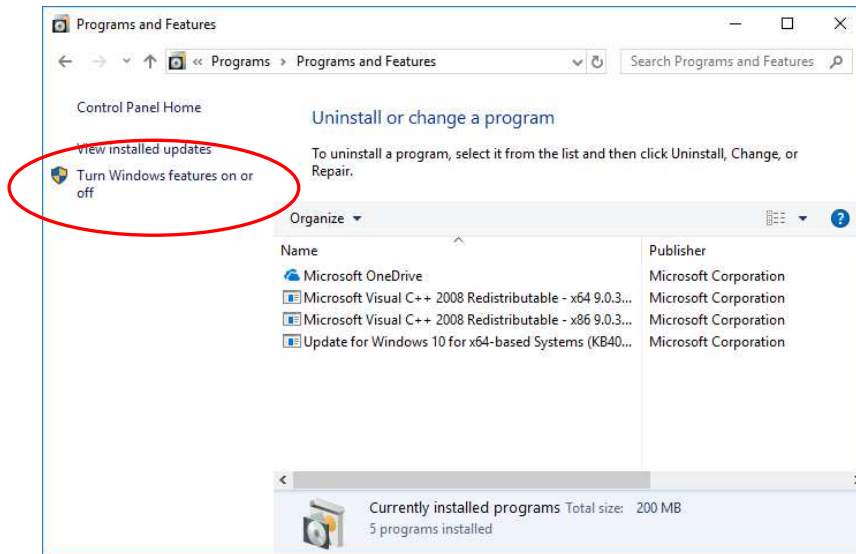


Figure3-6 Programs and Features

After selecting ".NET Framework 3.5 (includes .NET 2.0 and 3.0)", click the OK button. Installation will be performed and ".NET Framework 3.5" will be installed.

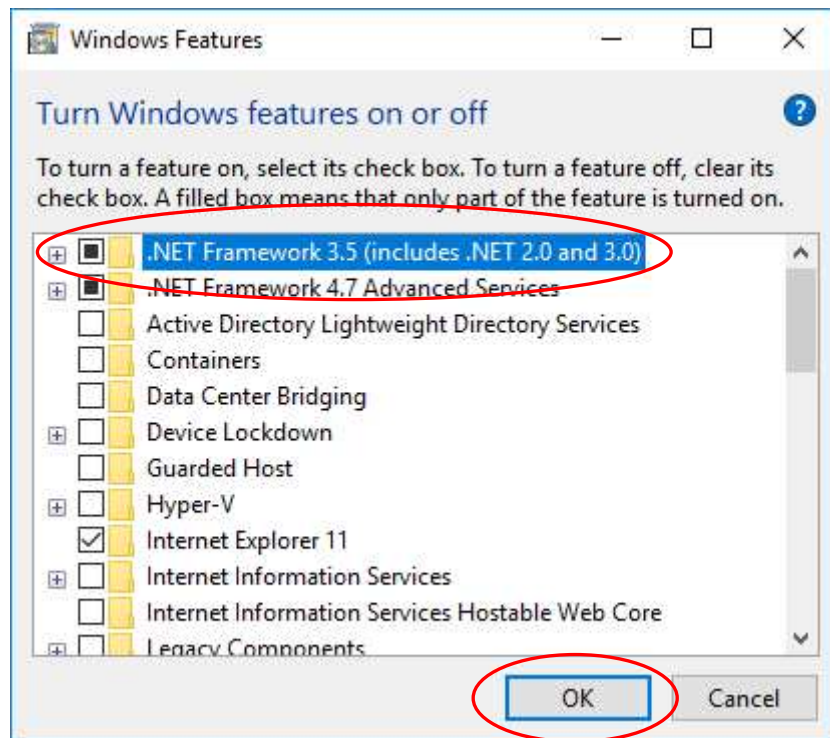


Figure3-7 Windows Features

Searching for required files is started. Please wait.

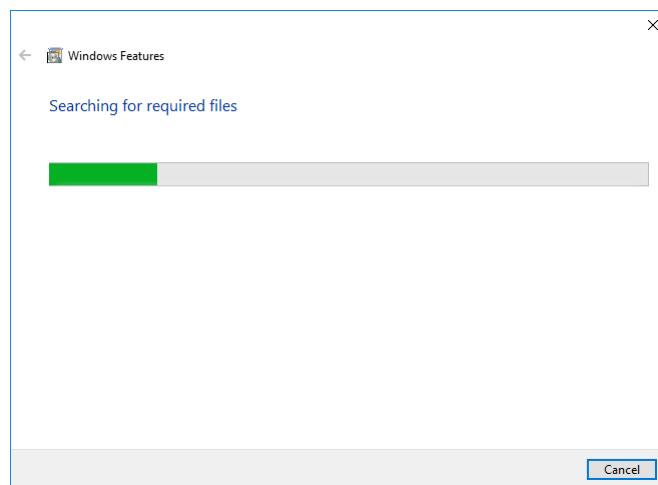


Figure3-8 Searching for required files

Select "Let Windows Update download the files for you" to run Windows Update.

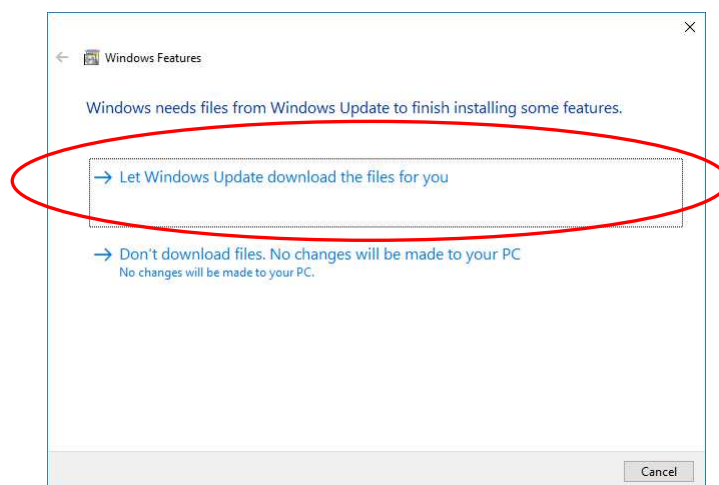


Figure3-9 Run Windows Update

Searching for required files is started. Please wait.

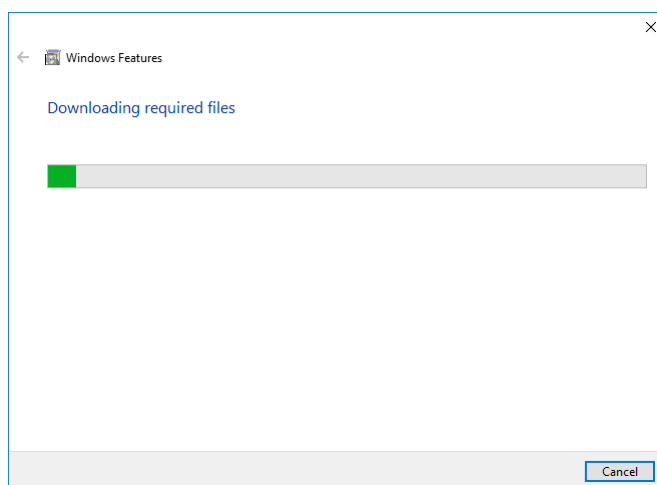


Figure3-10 Searching for required files

Applying changes. Please wait.

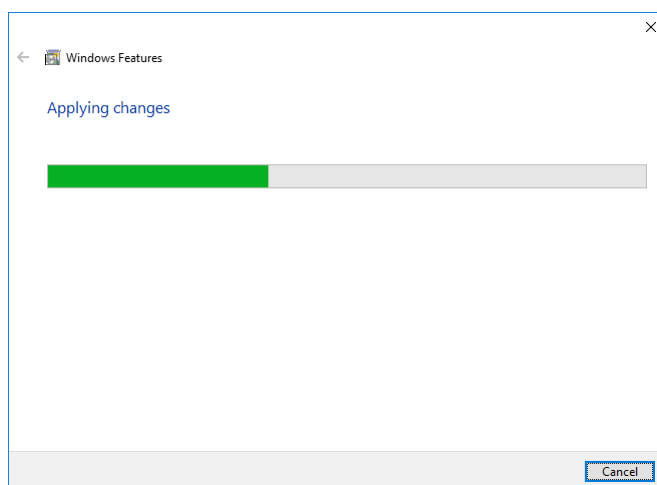


Figure3-11 Applying changes

Installation of .NET Framework 3.5 is complete. Click the "Close" button.

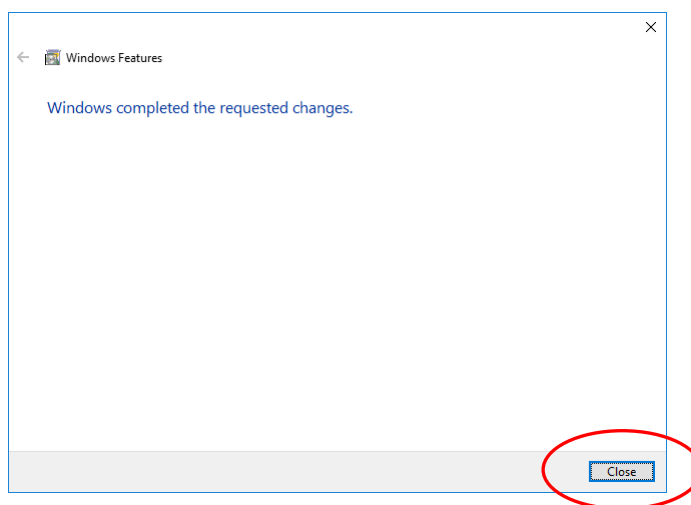


Figure3-12 Completed changes

TTM series loader software

Setup manual

1st Ed. Issued on April 9, 2019

ISSUED BY

TOHO ELECTRONICS INC.

2-4-3, Nishihashimoto, Midori-ku, Sagamihara-shi, Kanagawa

252-0131 JAPAN

TEL +81-42-700-2100

FAX +81-42-700-2112
