

ComSamp3

SETUP MANUAL

Thank you for using this application software.

A Setup is necessary in order to use this application software.

Please read the instruction manual after the setup.

TOHO ELECTRONICS INC.

Table of Contents

1. BRIEF OVERVIEW.....3

2. OPERATING ENVIRONMENT3

3. PREPARATION FOR THE INSTALLATION.....3

4. INSTALLATION.....4

5. UNINSTALLATION.....6

6. CAUTIONS.....8

6.1 In the case of Windows XP and Windows VISTA.....8

1. BRIEF OVERVIEW

This manual shows the setup procedures of the ComSamp3 installation.

* The manual is using Windows 7 screen image.

Please take note that if your operating system is not Windows 7, the screen design may differ a bit.

2. OPERATING ENVIRONMENT

Operating System

- Microsoft Windows XP
- Microsoft Windows Vista
- Microsoft Windows 7

3. PREPARATION FOR THE INSTALLATION

Please download ComSamp3 from our homepage.

The two files, "setup.exe" & "Setup.msi" are necessary for the installation.



ComSamp3 Installer

4. INSTALLATION

Install the application.

Start-up the "setup.exe".

※When the screen shown at the right side appears, follow "Cautions" under item no. 6.

① Click "Next" button.



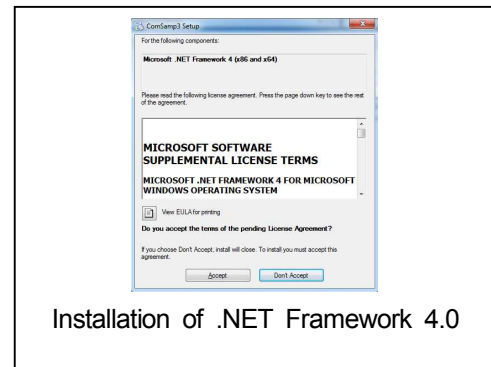
Installation of ComSamp3

②. Decide where to install the file.

Select the "Install Folder" as well as set the user.

When the user is set, click "Next" button.

- When "Everyone" is selected, short cut will be created on the start menu and at the desk top for all user account.
- When "Just me" is selected, short cut will be created on the start menu and at the desk top for the user who is currently logged-in.

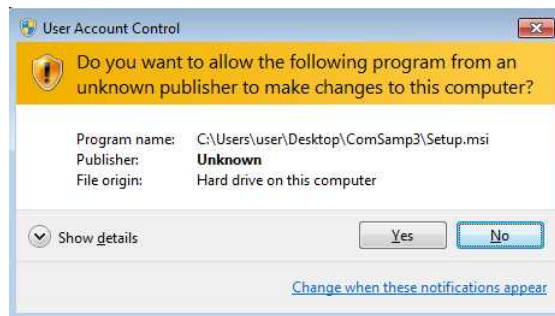


Installation of .NET Framework 4.0



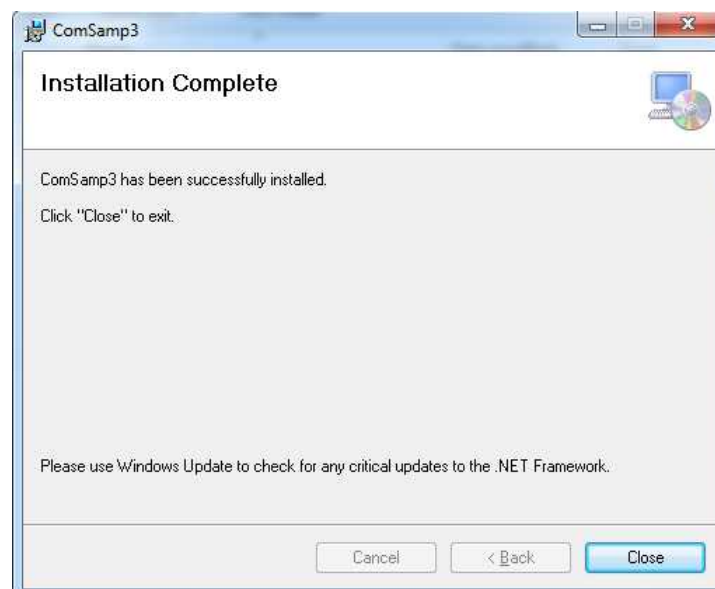
Selection of location to save ComSamp3

- ③. When a screen as shown below appears during the installation, click “Yes” button.
※Nothing may appear depending on the setting of your PC.



User Account Control

- ④. When a screen as shown below appears, the installation is complete.
Click “Close” button to close the installation screen of this application.



ComSamp3 Install completion Display

- ⑤. The icon of this application is made both at the desktop and at the start menu. Use this icon to start up the application.
For its details, please refer to the instruction manual of this application.

5. UNINSTALLATION

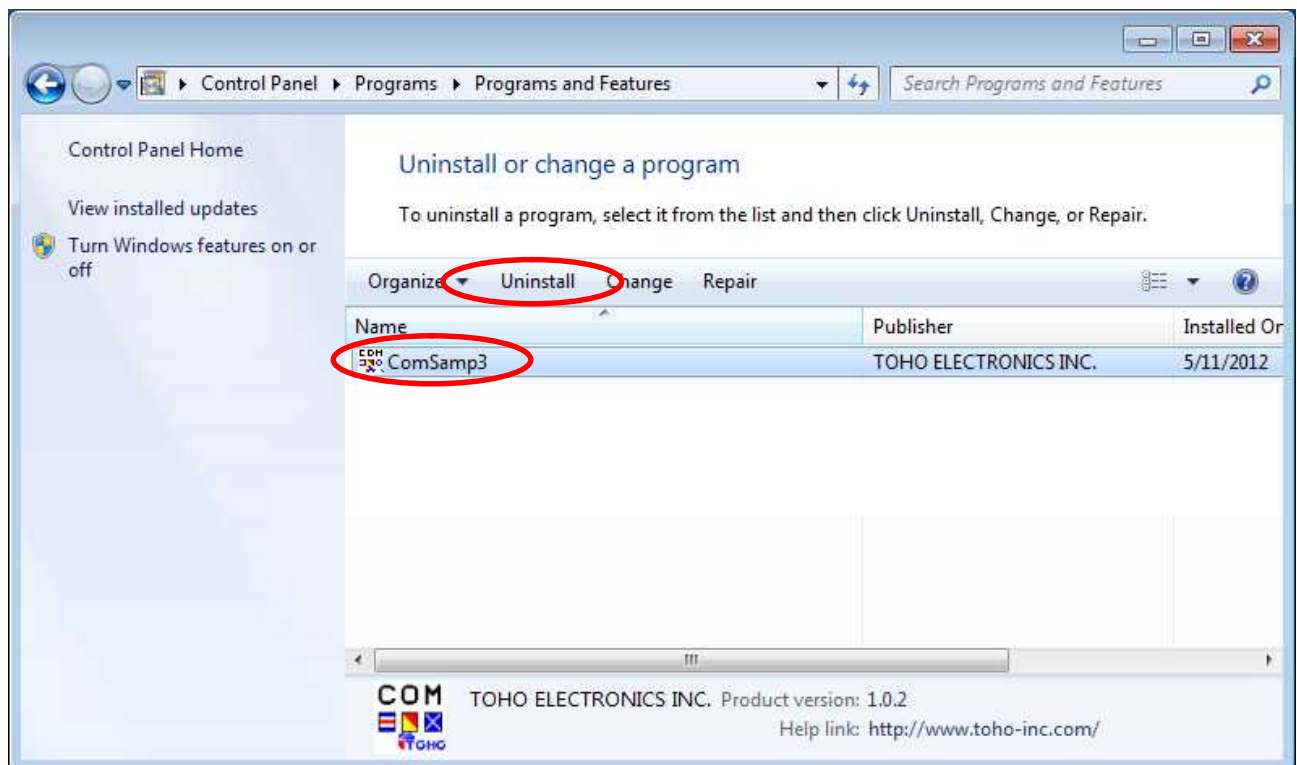
Uninstallation of the application.

- ①. Click the “Control Panel” from the start menu and click “Uninstall a program”.



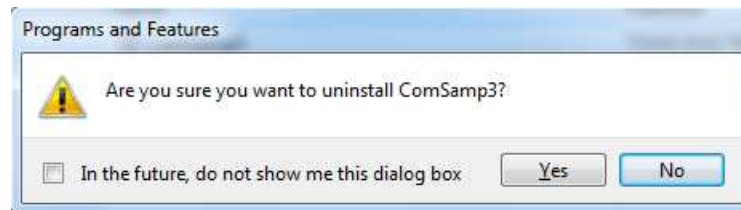
Control Panel

- ②. If below screen is shown, select and click “ComSamp3”, then, click “Uninstall” above as shown.

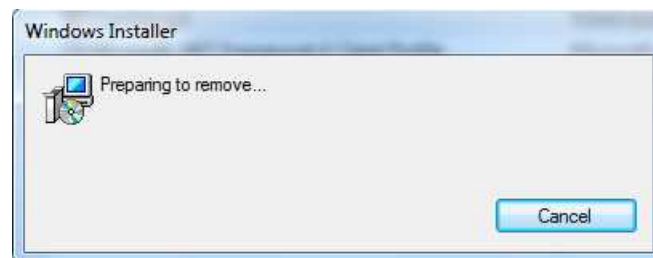


Programs and Features

- ③. A screen will appear verifying the uninstall process, click “Yes” button.



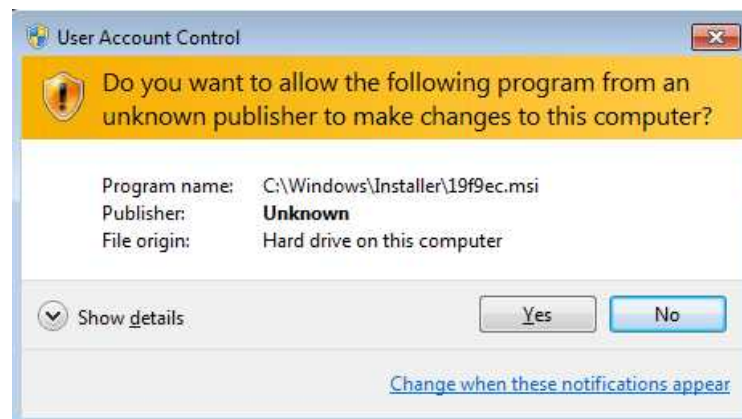
Uninstall Verification Screen from the Programs and Features



Uninstallation in Progress

- ④. When a screen as shown below appears during the uninstallation process, click “Yes” button.

*A screen may not appear depending on the setting of the PC.



User Account Control Screen during the Uninstallation Process

- ⑤. After the uninstallation screen disappears and back to the Programs and Features screen, check if “ComSamp3” is gone from the Programs and Features screen. If gone, then the uninstallation is complete.

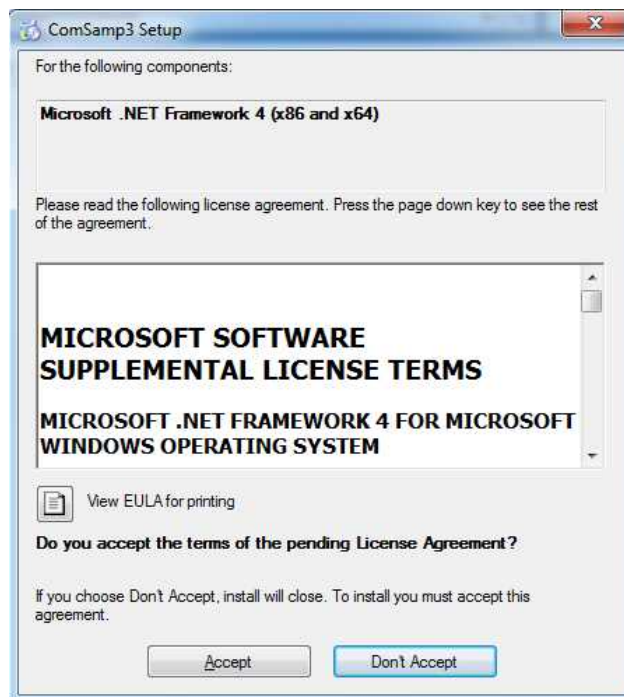
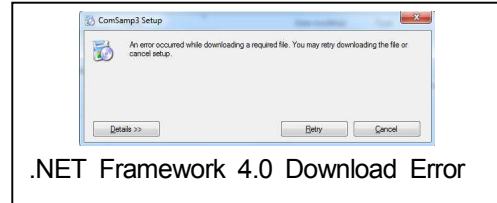
6. CAUTION

6.1 In the case of Windows XP and Windows Vista

Please execute the following steps in order that the application can be installed.

- ①. When “setup.exe” is activated, following screen is indicated.
- ②. Read the licensing terms and click “Accept” Button.

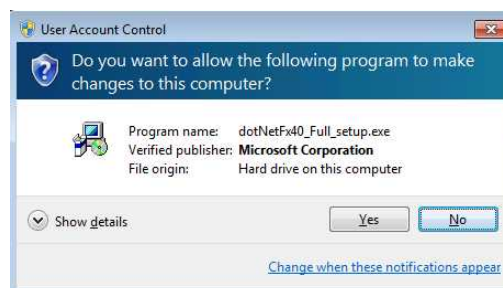
* If the screen shown at the right side Appears, follow the steps in 6.1.1



.NET Framework 4.0 Installation

- ④. In the following screen appears during the installation, click “Yes” button.

*A screen may not appear depending on the setting of the PC.



User Account Control Screen

- ⑤. If the Setup screen of ComSamp3 appears, the installation of .NET Framework 4.0 is complete. Proceed with item no. 4.

6.1.1 Manually installing the .NET Framework 4.0.

From below address, search for “Microsoft .NET Framework 4”and download necessary files.
“Microsoft Download Center”

<http://www.microsoft.com/en-us/download/>

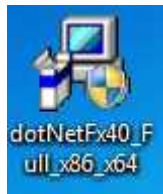
- Title : Microsoft .NET Framework 4 (Stand Alone Installer)
File Name : dotNetFx40_Full_x86_x64.exe

Download and prepare 1 files.

Copy files using storage media or through the network to a PC where you would like to install the application.

Make sure there are two files in a PC where you want to install the application.

Install downloaded files

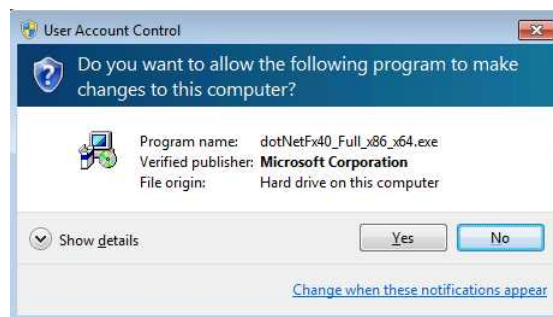


.NET Framework 4.0 Installer

① Activate file to be installed.

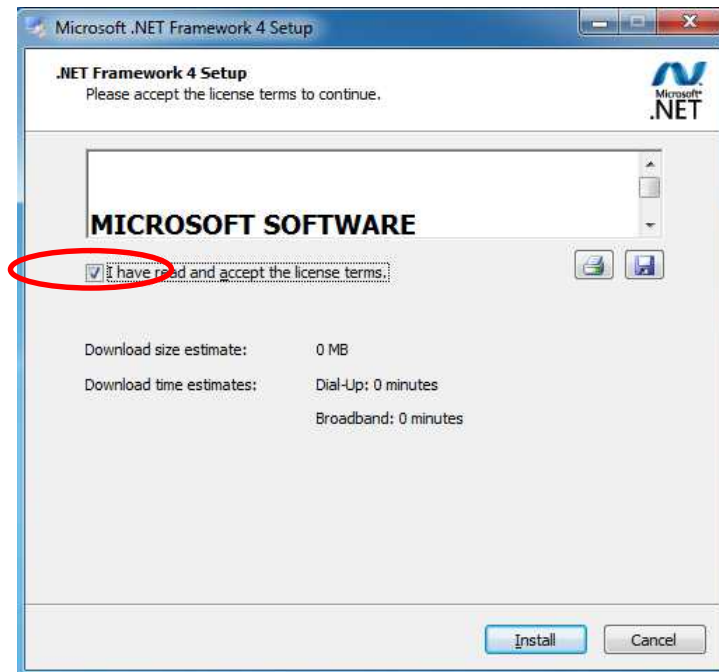
If the screen below appears upon activation, click “Yes” button.

*A screen may not appear depending on the setting of the PC.



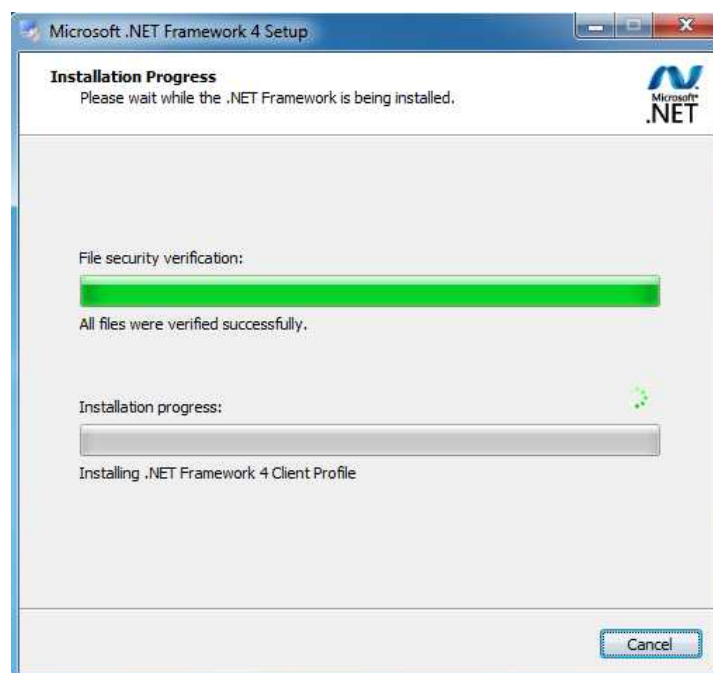
User Account Control Screen when installing .NET Framework4.0

- ②. After checking the license agreement, put a check on “I have read and accept the license terms” and click the “Install” button.



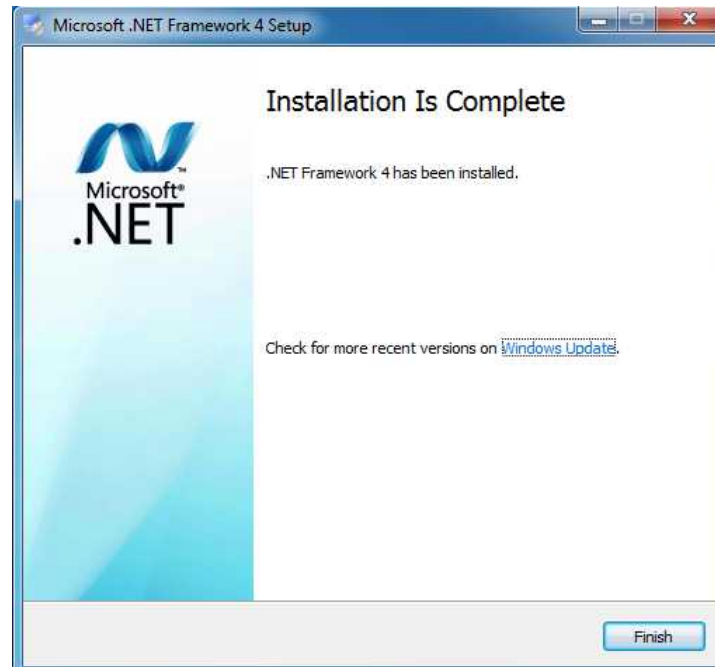
Checking the .NET Framework4.0 license agreement

- ③. Installation will start when the “Install” button is clicked.
The screen below indicates that the installation is in progress, so wait until the screen changes.



.NET Framework4.0 Installation in progress

- ④. If below screen appears, the installation is complete.
Click "Finish" button to close the installation screen.
Follow procedure no. 4.



.NET Framework4.0 Installation is completed



WEBSITE : <http://www.toho-inc.com/english/index.html> e-mail address: overseas@toho-inc.co.jp

Head Office : 1-13-1 Tanashioda Chuo, Sagamihara, Kanagawa 252-0245 JAPAN
TEL 042 (777) 3311 FAX 042 (777) 3751

Tokyo Sales Office : Chuo No. 7 Nishi Shinjuku Bldg.
7-18-5 Nishi Shinjuku, Shinjuku Ku, Tokyo 160-0023
TEL 03 (3363) 1331 FAX 03 (3363) 3335

Osaka Sales Office : Yachiyo Bldg. Higashi-Kan 7F
Kita 1-ban 21, 2-chome Tenjinbashi, Kita Ku, Osaka 530-0041
TEL 06 (6353) 9205 FAX 06 (6353) 9273

Kumamoto Sales Office : 2-10-23 Higashino, Kumamoto-shi 861-2106
Kumamoto-ken, Japan
TEL 096(214)6507 FAX 096(214)6510

(C) 2012 TOHO ELECTRONICS INC. All Rights Reserved.